



Yolo County Historical Collection

# NEWSLETTER

The Yolo County Historical Collection continues to bring programming to the community through its library branch exhibitions.

**November:**

Creepy Dolls @ Clarksburg and Knights Landing

**December:**

How to Throw a Party Like a Victorian @ Yolo and Clarksburg

This Month Grimm Tales opened at the Gibson House. This exhibition explores storytelling in many forms and features story quilts made by Yolo County Women, a creation story provided by the Yocha Dehe Winton Nation, and images & stories from Victorian Children's Books.

Come see the Exhibition! Grimm Tales: Stories of Life and Death at the Gibson House



## Collections Object Spotlight

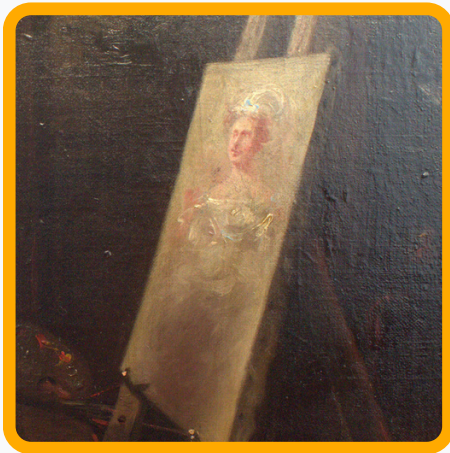
Artist at Work, Ida Waugh (American 1849-1919)

YO1-287-01

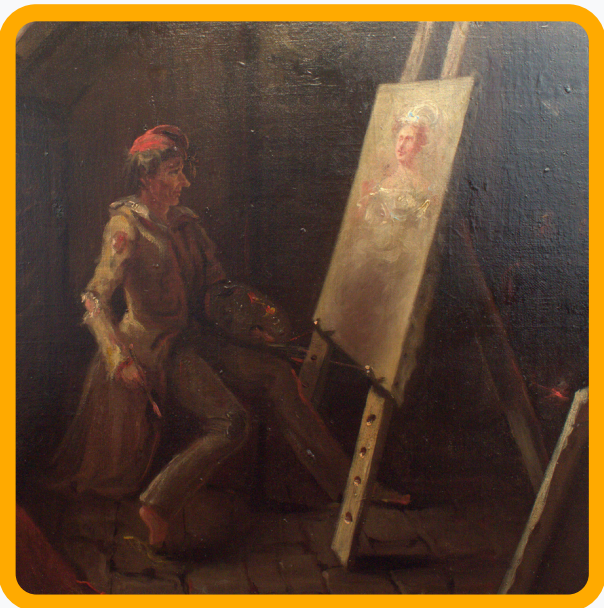
Gift of Herzl Friedlander

This painting was recently restored by Northern California Art Conservators.

Ida Waugh was a female artist from the American East Coast. Ida came from an artist family. Her father Samuel Bell Waugh was a painter known for his portraits, her brother was famous marine painter Frederick Judd Waugh, and her step-mother was miniaturist, Mary Eliza Young Waugh.



Ida's father taught her how to paint in their home in Pennsylvania before she attended the Pennsylvania Academy of Fine Arts to hone her skill. Ida also attended many European art schools including the Academie Julian in Paris. She gained fame for her oil paintings, mainly portraiture, and her work illustrating children's books with her life long companion Amy Blanchard, with whom she lived until she died in 1919. Ida's work focused on finding the humanity of her subjects. In *Artist at Work*, Ida features a painter reflecting on his in progress portrait of a woman. Growing up in a house full of artists, this would have been a familiar scene for Ida. Here, she captures the relationship between the artist and the painting. Perhaps this is a reversal of the 15th-century Dutch *Self-Portrait* by Judith Leyster.



### Open Hours:

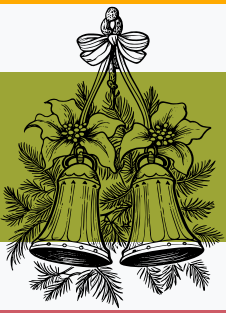
Tuesday and Thursday 12-4pm

Every Third Saturday from 8 am to 4pm

**Schedule a research appointment today!**

Appointments available Tuesdays and

Thursdays from 8 am to 12 pm



## Upcoming Holiday closures

With the upcoming Holiday Season approaching,  
The Gibson House will be closed on the following dates:

Thursday: November 29th

Tuesday: December 24th

Thursday: December 26th

The Gibson House WILL be open on Saturday December  
21st from 8am to 4pm.



## Community Resources at the Gibson House

The Yolo County Historical Collection and the Gibson House are community resources. As we approach the end of the year, consider using the Yolo County Historical Collection to bring a piece of history to your events or meetings in the New Year. Contact Museum Curator Sarah Bartlett at [Sarah.bartlett@yolocounty.gov](mailto:Sarah.bartlett@yolocounty.gov) for more information on how you can utilize this free county resource.