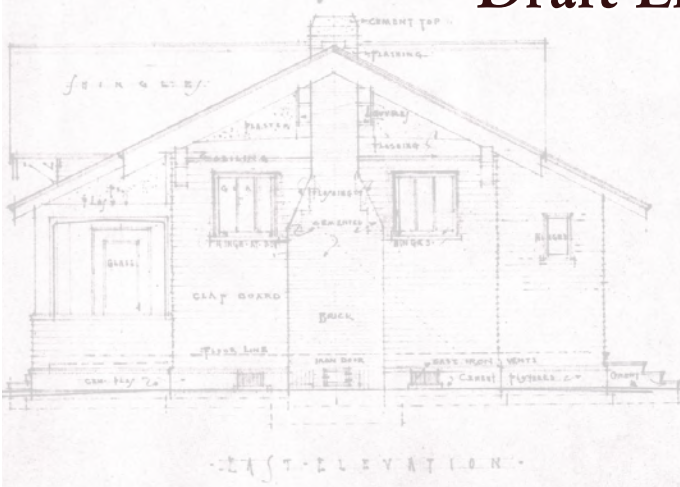


New Yolo Branch Library Building Project Draft Environmental Impact Report

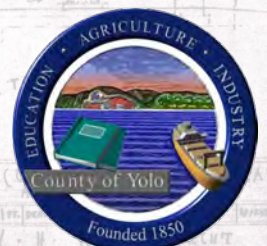
Volume I

July 20, 2018

SCH #2017112036



Yolo County Library
625 Court Street, Woodland, CA 95695



This page intentionally left blank.

YOLO COUNTY LIBRARY
NEW YOLO BRANCH LIBRARY BUILDING PROJECT
DRAFT ENVIRONMENTAL IMPACT REPORT

TABLE OF CONTENTS

DRAFT EIR VOLUME I

S EIR SUMMARY 1

 S.1 Project Description..... 1

 S.2 Project Components 2

 S.3 Significant Impacts and Mitigation Measures..... 3

 S.4 Alternatives to the Proposed Project 23

 S.5 Known Areas of Controversy / Issues To Be Resolved 26

Chapter 1 Introduction..... **1-1**

 1.1 Project Overview and Background Information 1-1

 1.1.1 Yolo Branch Library Modular Building (Interim Library Services)..... 1-3

 1.1.2 Yolo County Acquisition of the Property at 14184 2nd Street, Yolo, CA 1-3

 1.1.3 2017 General Plan/Zoning Code Amendments for 14184 2nd Street, Yolo, CA 1-3

 1.2 CEQA Lead Agency Information 1-4

 1.3 Intended Uses of this EIR 1-4

 1.3.1 Responsible, Trustee, and Interested Agencies 1-4

 1.4 EIR Scoping Information 1-5

 1.4.1 Notice of Preparation (NOP) of an EIR 1-5

 1.4.2 Public EIR Scoping Meeting 1-5

 1.4.3 Native American Consultation 1-5

 1.4.4 EIR Scope and Content 1-6

 1.5 Chapter References 1-6

Chapter 2 Project Description **2-1**

 2.1 Project Location and Site Description 2-1

 2.1.1 Historical Resource Status of the Yolo Branch Library Building..... 2-7

 2.1.2 Existing Library Operations and Programming 2-7

 2.1.3 Existing Site Access 2-7

 2.1.4 Existing Elevation and Topography 2-7

 2.1.5 Existing Utilities..... 2-8

 2.2 Project Components 2-8

 2.2.1 Zoning/General Plan Amendments and Lot Merger 2-8

 2.2.2 Project Construction 2-9

 2.2.3 On- and Off-Site Utility Improvements 2-10

 2.2.4 Proposed New Yolo Branch Library Building Operations 2-10

2.3	Proposed New Yolo Branch Library Description and Features.....	2-10
2.3.1	Conceptual Layout and Facilities	2-10
2.3.2	Conceptual Design / Compatibility with Existing Historic Library Features ..	2-13
2.3.3	Lighting	2-15
2.3.4	Community Room Use	2-15
2.3.5	Circulation and Parking	2-16
2.3.6	Fire Access	2-16
2.4	Project Objectives	2-16
2.5	Permits and Approvals Required by the Project	2-16
2.6	Chapter References	2-17
Chapter 3 Impact Analysis Methodology		3-1
3.1	Analytical Methodology	3-1
3.2	Summary Of EIR Scoping Comments	3-2
3.3	Project Impacts Found Not To Be Significant.....	3-3
3.3.1	Agriculture and Forestry Resources	3-3
3.3.2	Geology and Soils	3-3
3.3.2.1	Environmental Setting.....	3-3
3.3.2.2	Regulatory Setting.....	3-5
3.3.2.3	Impact Discussion	3-5
3.3.3	Greenhouse Gases and Energy	3-6
3.3.3.1	Environmental Setting.....	3-7
3.3.3.2	Regulatory Setting.....	3-7
3.3.3.1	GHG and Energy Impact Analysis.....	3-10
3.3.4	Land Use and Planning.....	3-11
3.3.5	Mineral Resources	3-12
3.3.6	Population and Housing	3-12
3.3.7	Public Services	3-12
3.3.8	Recreation.....	3-13
3.3.9	Transportation	3-13
3.3.10	Utilities and Service Systems	3-13
3.4	Chapter References	3-14
Chapter 4 Cultural/Tribal Cultural Resources.....		4-1
4.1	Environmental Setting	4-1
4.1.1	Prehistoric, Ethnographic, and Historic Setting	4-1
4.1.2	Cultural/Tribal Cultural Resource Inventory	4-5
4.1.2.1	Records Searches.....	4-5
4.1.2.2	Site Survey	4-7
4.1.2.3	Native American Notification and Consultation Pursuant to AB 52	4-8
4.1.2.4	Yolo Branch Library Building Historic Resource Evaluation	4-8
4.1.3	Paleontological Resources.....	4-13
4.2	Regulatory Setting	4-14

4.2.1	California Environmental Quality Act (CEQA).....	4-14
4.2.1.1	Historical Resources.....	4-15
4.2.1.2	Unique Archaeological Resources	4-16
4.2.1.3	Assembly Bill 52 / Tribal Cultural Resources	4-16
4.2.2	National Register of Historic Places (NRHP) Criteria.....	4-17
4.2.3	Secretary of the Interior’s Standards for the Treatment of Historic Properties	4-17
4.2.4	California Register of Historical Resources	4-17
4.2.5	California Historic Building Code	4-18
4.2.6	Public Resources Code Section 5097.5	4-18
4.2.7	California Health and Safety Code Section 7050.5.....	4-18
4.2.8	Penal Code Section 622.5.....	4-18
4.2.9	Native American Graves Protection and Repatriation Act of 1990	4-19
4.2.10	California Native American Graves Protection and Repatriation Act of 2001	4-19
4.2.11	County of Yolo 2030 Countywide General Plan.....	4-19
4.2.12	County of Yolo Code of Ordinances.....	4-21
4.3	Project Impacts and Mitigation Measures.....	4-22
4.3.1	Thresholds of Significance.....	4-22
4.3.2	Potential Impacts to Known Historical Resources, Archaeological Resources, Paleontological Resources, Human Remains, and/or Tribal Cultural Resources	4-23
4.3.3	Potential Impacts to Unrecorded Historical Resources, Archaeological Resources, Paleontological Resources, Human Remains, and/or Tribal Cultural Resources.....	4-30
4.4	Chapter References	4-35
Chapter 5 Aesthetics/Visual Resources.....		5-1
5.1	Environmental Setting	5-1
5.1.1	Existing Visual Character of the Project Site and Surroundings.....	5-1
5.1.2	Existing Sources of Light and Glare	5-2
5.1.3	Scenic Highways	5-2
5.1.4	Sensitive Visual Receptor Locations.....	5-2
5.2	Regulatory Setting	5-3
5.2.1	County of Yolo 2030 Countywide General Plan.....	5-3
5.2.2	County of Yolo Code of Ordinances	5-5
5.3	Project Impacts and Mitigation Measures.....	5-5
5.3.1	Thresholds of Significance.....	5-6
5.3.2	Potential Impacts to Existing Visual Character and Quality.....	5-7
5.4	Chapter References	5-9
Chapter 6 Air Quality.....		6-1
6.1	Background Information and Environmental Setting.....	6-1
6.1.1	Regulated Air Pollutants	6-1
6.1.2	Sacramento Valley Air Basin.....	6-3

6.1.3	Air Quality Conditions and Attainment Status.....	6-4
6.1.4	Air Quality Sensitive Receptors	6-6
6.2	Regulatory Setting	6-6
6.2.1	Federal and State Clean Air Acts	6-6
6.2.2	CARB In-Use Off Road Diesel Equipment Program.....	6-6
6.2.3	Yolo-Solano Air Quality Management District (YSAQMD)	6-7
6.2.4	County of Yolo 2030 Countywide General Plan.....	6-8
6.3	Project Impacts and Mitigation Measures.....	6-9
6.3.1	Thresholds of Significance.....	6-9
6.3.2	Potential Impacts from Project-Related Emissions of Air Pollutants	6-10
6.4	Chapter References	6-12
Chapter 7 Biological Resources		7-1
7.1	Environmental Setting	7-1
7.1.1	Site Vegetation / Habitat	7-1
7.1.2	Site Wildlife	7-1
7.1.3	Special-Status Species	7-2
7.2	Regulatory Setting	7-3
7.2.1	Federal Endangered Species Act.....	7-3
7.2.2	Migratory Bird Treaty Act	7-4
7.2.3	California Endangered Species Act.....	7-4
7.2.4	California Fish and Game Code	7-4
7.2.5	California Native Plant Protection Act.....	7-5
7.2.6	California Native Plant Society Inventory	7-5
7.2.7	Yolo County General Plan	7-5
7.2.8	Yolo County Habitat Conservation Plan/Natural Community Conservation Plan.....	7-6
7.3	Project Impacts And Mitigation Measures	7-6
7.3.1	Thresholds of Significance.....	7-7
7.3.2	Potential Impacts to Nesting Birds and Roosting Bats.....	7-7
7.4	Chapter References	7-10
Chapter 8 Hazards and Hazardous Materials		8-1
8.1	Environmental Setting	8-1
8.1.1	Past Land Uses and Activities.....	8-1
8.1.2	Present Site Conditions / Phase 1 Environmental Site Assessment Results	8-1
8.1.3	Asbestos- and Lead-Containing Building Materials	8-3
8.1.4	Electric Lines, Pipelines, and Storage Tanks	8-3
8.1.5	Railroads and Airports.....	8-3
8.1.6	Other Risks	8-3
8.2	Project Components.....	8-4
8.2.1	Federal Toxic Substances Control Act and Related Federal Regulations.....	8-5
8.2.2	Yolo Solano Air Quality Management District (YSAQMD).....	8-5

8.2.3 County of Yolo 2030 Countywide General Plan..... 8-6

8.3 Project Impacts and Mitigation Measures..... 8-6

8.3.1 Thresholds of Significance..... 8-7

8.3.2 Potential Impacts to the Public and the Environment from Hazards and Hazardous Materials..... 8-7

8.4 Chapter References 8-10

Chapter 9 Hydrology and Water Quality..... 9-1

9.1 Environmental Setting 9-1

9.1.1 Local Watershed..... 9-1

9.1.2 Site Hydrology 9-1

9.1.3 Flood Hazards..... 9-2

9.1.4 Dam Inundation Areas..... 9-2

9.2 Regulatory Setting 9-3

9.2.1 Federal Clean Water Act 9-3

9.2.2 Federal Safe Drinking Water Act 9-4

9.2.3 Federal Flood Insurance Program 9-4

9.2.4 State Porter-Cologne Water Quality Control Act..... 9-5

9.2.5 State Water Resources Control Board..... 9-5

9.2.6 County of Yolo Integrated Regional Water Management Plan 9-6

9.2.7 County of Yolo Multi-Jurisdiction Hazard Mitigation Plan 9-6

9.2.8 County of Yolo 2030 Countywide General Plan..... 9-6

9.2.9 County of Yolo Code of Ordinances..... 9-8

9.2.10 County of Yolo Improvement Standards..... 9-9

9.3 Project Impacts and Mitigation Measures..... 9-9

9.3.1 Thresholds of Significance..... 9-10

9.3.2 Potential Temporary Construction Related Impacts 9-10

9.3.3 Potential Operational Water Quality Impacts 9-12

9.3.4 Potential Flooding Impacts..... 9-13

9.4 Chapter References 9-14

Chapter 10 Noise and Vibration..... 10-1

10.1 Background Information on Acoustics and Vibration 10-1

10.1.1 Noise Definition; Sound Measurement, Characterization, and Propagation.... 10-1

10.1.2 Noise Effects 10-3

10.1.3 Vibration..... 10-4

10.2 Environmental Setting 10-4

10.2.1 Existing Ambient Noise Environment 10-4

10.2.2 Noise Sensitive Receptors..... 10-5

10.3 Regulatory Setting 10-5

10.3.1 California Department of Transportation (Caltrans)..... 10-5

10.3.2 County of Yolo 2030 Countywide General Plan..... 10-6

10.4 Project Impacts and Mitigation Measures..... 10-7

10.4.1	Thresholds of Significance	10-8
10.4.2	Potential Impacts from Construction Noise and Vibration	10-8
10.4.3	Potential Temporary or Periodic Impacts from Library Operations	10-13
10.5	Chapter References	10-14
Chapter 11	Cumulative Impacts.....	11-1
11.1	Methodology	11-1
11.2	Analysis of Cumulative Impacts	11-3
11.2.1	Aesthetics	11-4
11.2.2	Agriculture and Forestry Resources	11-4
11.2.3	Air Quality.....	11-4
11.2.4	Biological Resources	11-4
11.2.5	Cultural/Tribal Cultural Resources	11-5
11.2.6	Geology and Soils	11-5
11.2.7	Greenhouse Gases and Energy	11-6
11.2.8	Hazards and Hazardous Materials.....	11-6
11.2.9	Hydrology and Water Quality	11-6
11.2.10	Land Use and Planning.....	11-6
11.2.11	Mineral Resources	11-7
11.2.12	Population and Housing	11-7
11.2.13	Public Services	11-7
11.2.14	Recreation.....	11-7
11.2.15	Transportation	11-7
11.2.16	Utilities and Service Systems	11-7
11.3	Chapter References	11-7
Chapter 12	Alternatives	12-1
12.1	Alternatives Selection	12-1
12.1.1	Summary of Project Objectives and Significant Effects	12-1
12.2	Alternatives Considered But Rejected	12-3
12.2.1	Rehabilitate the Existing Yolo Branch Library Building.....	12-3
12.2.2	Expand the Existing Yolo Branch Library Building	12-5
12.2.3	Preserve the Existing Yolo Branch Library Building	12-7
12.2.4	Alternative Site Location.....	12-8
12.2.5	Temporary Service Options.....	12-9
12.3	No Project Alternative	12-9
12.4	Reduced Project Alternative	12-10
12.5	Environmentally Superior Alternative	12-11
12.6	Chapter References	12-12
Chapter 13	Other CEQA Considerations.....	13-1
13.1	Potentially Unavoidable Significant Impacts.....	13-1
13.2	Significant Irreversible Environmental Changes	13-1
13.3	Growth Inducing Impact of the Project	13-2

13.4 Potential Inconsistency with Other Local Plans 13-2

Chapter 14 Report Preparers and Agencies/Organizations Consulted 14-1

14.1 Report Preparers..... 14-1

14.2 Persons and Organizations Consulted..... 14-1

LIST OF FIGURES

Figure 1-1 Regional Setting 1-2

Figure 2-1 Project Vicinity 2-2

Figure 2-2 Site Photos (Yolo Branch Library Property)..... 2-3

Figure 2-3 Site Photos (Residential Property at 14184 2nd Street) 2-4

Figure 2-4 Site Photos (Surrounding Areas)..... 2-5

Figure 2-5 Existing Site Plan 2-6

Figure 2-6 Conceptual Site Plan 2-11

Figure 2-7 Conceptual Visual Renderings 2-12

Figure 2-8 Conceptual Floor Plan..... 2-14

Figure 4-1 Tribal Cultural Resource Discovered in the Project Area..... 4-7

Figure 4-2 Yolo Branch Library Character-Defining Features (Asymmetrical Features)..... 4-11

Figure 4-3 Yolo Branch Library Character-Defining Features (Gable End and Porch)..... 4-12

Figure 4-4 Yolo Branch Library Character-Defining Features (Fireplace) 4-13

LIST OF TABLES

Table S-1 Summary of New Yolo Branch Library Building Project Significant Environmental Impacts and Mitigation Measures 5

Table 2-1 Summary of Project Construction Phases, Duration, and Equipment..... 2-9

Table 2-2 Existing Yolo Branch Library Character-Defining Features..... 2-15

Table 2-3 Potential Project Permits and Approvals 2-17

Table 4-1 Summary of CHRIS Prehistoric Records Search Results 4-5

Table 4-2 Summary of CHRIS Historic Records Search Results..... 4-5

Table 6-1 Existing Yolo Branch Library Emissions (Tons Per Year) 6-4

Table 6-2 Ambient Air Quality Standards and YSAQMD Attainment Status 6-5

Table 6-3 Potentially Applicable YSCAQMD Rules and Regulations 6-7

Table 6-4 Potential Project Construction Emissions 6-10

Table 8-1 Regulation of Hazardous Materials 8-4

Table 10-1 Typical Outdoor and Indoor Noise Levels 10-2

Table 10-2 Caltrans’ Vibration Threshold Criteria for Building Damage..... 10-6

Table 10-3 Caltrans’ Vibration Threshold Criteria for Human Response..... 10-6

Table 10-4 Estimated Construction Equipment Noise Levels 10-9

Table 10-5 Estimated Ground-Borne Vibration Levels from Construction Equipment..... 10-11

Table 11-1 List of Past, Present and Probable Future Projects..... 11-2

Table 12-1 Summary of Existing Yolo Branch Library Facility Conditions..... 12-3

Table 12-2 Existing Yolo Branch Library Guidelines and Benchmarks 12-5

Table 12-3 Comparison of Proposed Project Impacts against Project Alternatives 12-11

DRAFT EIR VOLUME II (APPENDICES)

- APPENDIX A: EIR Scoping Documents
- November 13, 2017, Notice of Preparation (NOP)
 - NOP Distribution List
 - Written Comments Received on the NOP
- APPENDIX B Air Quality and Greenhouse Gas Emissions Estimates
- APPENDIX C: June 2018 Historical Resources Report (JRP Historical Consulting)
- APPENDIX D: Cultural / Tribal Cultural Resources Consultation Information
- D1: California Historical Resource Inventory System (CHRIS) Search
 - D2: Native American Heritage Commission (NAHC)
Sacred Lands File (SLF) Search
 - D3: Native American Scoping
 - D4: Assembly Bill (AB) 52 Consultation
- APPENDIX E: Biological Resources Special-Status Species Tables

LIST OF ACRONYMS, ABBREVIATIONS, AND SYMBOLS USED IN THIS EIR	
Acronym, Abbreviation, or Symbol	Full Phrase or Description
AB	Assembly Bill
ADA	Americans with Disabilities Act
AMSL	Above Mean Sea Level
APN	Assessor's Parcel Number
BMP(s)	Best Management Practices
B.P.	Before Present
BTUs	British Thermal Units
CAAQS	California Ambient Air Quality Standards
CalEEMod	California Emissions Estimator Model
CalEPA	California Environmental Protection Agency
CARB	California Air Resources Board
CAP	Climate Action Plan
CBC	California Building Code
CCAA	California Clean Air Act
CCR	California Code of Regulations
CDC	California Department of Conservation
CDFG	California Department of Fish and Game (now CDFW)
CDFW	California Department of Fish and Wildlife (formerly CDFG)
CEQA	California Environmental Quality Act
CESA	California Endangered Species Act
CFR	Code of Federal Regulations
CHBC	California Historical Building Code
CHRIS	California Historical Resources Information System
CH ₄	Methane
CNEL	Community Noise Equivalent Level
CNPPA	California Native Plant Protection Act
CNPS	California Native Plant Society
CSSC	California Species of Special Concern
CO	Carbon Monoxide
CO ₂	Carbon Dioxide
CRHR	California Register of Historical Resources

LIST OF ACRONYMS, ABBREVIATIONS, AND SYMBOLS USED IN THIS EIR	
Acronym, Abbreviation, or Symbol	Full Phrase or Description
CSSC	California Species of Special Concern
CUPA	Certified Unified Programming Agency
CWA	Clean Water Act
dB	Decibel
dBA	Decibels, A-Weighted
DNL	Day-Night Noise Level
DPM	Diesel Particulate Matter
DTSC	Department of Toxic Substances Control
DWQ	Division of Water Quality
EIR	Environmental Impact Report
ESA	Environmental Site Assessment
FAR	Floor to Area Ratio
FCI	Facility Condition Index
FEMA	Federal Emergency Management Agency
FESA	Federal Endangered Species Act
FHWA	Federal Highway Works Administration
FIRM	Flood Insurance Rate Map
FTA	Federal Transit Administration
GHG	Greenhouse Gas(es)
GWP	Global Warming Potential
H ₂ S	Hydrogen Sulfide
HABS	Historical American Building Society
HAP	Hazardous Air Pollutants
HCP	Habitat Conservation Plan
HFCs	Hydrofluorocarbons
HVAC	Heating, Ventilation, and Air Conditioning
Hz	Hertz
I	Interstate
IS	Initial Study
LAMP	Local Agency Management Program
LEED	Leadership in Energy and Environmental Design
Leq	Average / Equivalent Noise Level
LID	Low Impact Development

LIST OF ACRONYMS, ABBREVIATIONS, AND SYMBOLS USED IN THIS EIR	
Acronym, Abbreviation, or Symbol	Full Phrase or Description
Lmax	Maximum Noise Level
MBTA	Migratory Bird Treaty Act
MLD	Most Likely Descendant
MS4	Municipal Separate Storm Sewer System
MS4	Municipal Separate Storm Sewer System
MTCO ₂ e	Metric Tons of Carbon Dioxide Equivalents
NAAQS	National Ambient Air Quality Standards
NAGPRA	Native American Graves Protection and Repatriation Act
NAHC	Native American Heritage Commission
NCCP	Natural Community Conservation Plan
ND	Negative Declaration
NESHAP	National Emissions Standards for Hazardous Air Pollutants
NOAA	National Oceanic and Atmospheric Administration
NOI	Notice of Intent
NOP	Notice of Preparation
NO ₂	Nitrogen Dioxide
NO _x	Oxides of Nitrogen
NPDES	National Pollutant Discharge Elimination System
NPS	National Park Service
NRHP	National Register of Historic Places
NWIC	Northwest Information Center
N ₂ O	Nitrous Oxide
OHP	Office of Historic Preservation
OWTS	Onsite Wastewater Treatment System
O ₃	Ozone
PCBs	Polychlorinated Biphenyls
PFCs	Perfluorocarbons
PG&E	Pacific Gas and Electric Company
PM	Particulate Matter
PPM	Parts per Million
PPV	Peak Particle Velocity

LIST OF ACRONYMS, ABBREVIATIONS, AND SYMBOLS USED IN THIS EIR	
Acronym, Abbreviation, or Symbol	Full Phrase or Description
PQ	Public and Quasi Public (General Plan designation)
PQP	Public and Quasi Public (Zoning District)
PRC	Public Resources Code
RACM	Regulated Asbestos-Containing Material
ROG	Reactive Organic Gases
RL	Residential Low (General Plan designation)
RWQCB	Regional Water Quality Control Board
R-L	Low Density Residential (Zoning District)
SCH	State Clearinghouse
SDWA	Safe Drinking Water Act
SF ₆	Sulfur Hexafluoride
SIP	State Implementation Plan
SO ₂	Sulfur Dioxide
SO _x	Sulfates
SVAB	Sacramento Valley Air Basin
SWPPP	Storm Water Pollution Prevention Plan
SWRCB	State Water Resources Control Board
TAC	Toxic Air Contaminants
TMDL	Total Maximum Daily Load
TSCA	Toxic Substances Control Act
USDA	United States Department of Agriculture
U.S. EPA	United States Environmental Protection Agency
USGS	United States Geological Survey
USFWS	United States Fish and Wildlife Service
UST	Underground Storage Tank
WDR	Waste Discharge Requirements
YCL	Yolo County Library
YSAQMD	Yolo Solano Air Quality Management District
§	Section
µg/m ³	Micrograms per Cubic Meter
°F	Degrees Fahrenheit
%	Percent

EIR SUMMARY

S.1 PROJECT DESCRIPTION

The Yolo County Library (YCL) has prepared this Environmental Impact Report (EIR) to evaluate the potentially significant environmental impacts that may result from the construction and operation of its proposed New Yolo Branch Library Building Project (proposed project). This proposed project would demolish and replace the existing Yolo Branch Library with a new library building. The existing Yolo Branch Library was constructed in 1918 and is a historical resource listed on the California Register of Historical Resources (CRHR) and the National Register of Historic Places (NRHP); however, existing structural and other concerns have required the County to cease use of the Yolo Branch Library building. Library operations from the historic building ceased in early March 2018 and the library now operates out of a temporary modular building placed at the site.

In general, the YCL's proposed New Yolo Branch Library Building Project would involve:

- Removal of the existing Yolo Branch Library building and associated site features at 37750 Sacramento Street in unincorporated Yolo County;
- Removal of existing residential development at 14184 2nd Street in unincorporated Yolo County;
- Rezoning of the existing residential parcel to zoning (PQP) and General Plan land use (PQ) designations that permit a library use;
- Merger of the approximately 0.27-acre Yolo Branch Library and approximately 0.37-acre residential parcels into a single, approximately 0.65-acre parcel of land; and
- Construction and operation of a new, approximately 3,800 square-foot, single-story Yolo Branch Library building.

The YCL anticipates beginning site demolition in Spring 2019 and opening the new Yolo Branch Library Building in Winter 2019; however, the proposed project's construction schedule may change depending on the timing and availability of future funding. Although the start and end dates of construction may change, the type and total duration of potential construction activities would remain the same as described in this EIR.

S.1.1 Project Location

The existing Yolo Branch Library is located at 37750 Sacramento Street, in the unincorporated Town of Yolo, near the center of the County. The existing Yolo Branch Library property is an approximately 0.27-acre parcel of developed land (Assessor's Parcel Number (APN) 025-401-013) located at the northwest corner of 2nd Street and Sacramento Street, near the center of the Town. The County purchased an adjoining residential property at 14184 2nd Street to the north of the existing library property (APN 025-401-012) and intends to demolish the existing single-family home, rezone the residential use to public facility use, and combine the two parcels. The two properties (existing library and adjacent residential home to the north) comprise the project area and are approximately 0.65 acres in total size. In general, the project area is bordered by a single-family residential property on the north, 2nd Street and residential land uses on the east,

Sacramento Street and residential and commercial land uses on the south, and the Yolo Fire Station on the west.

S.2 PROJECT COMPONENTS

The YCL is proposing to replace the existing Yolo Branch Library with a new, larger library facility. The new Yolo Branch Library facility would better serve the community and accommodate anticipated growth and need for library services within the branch library's service area.

S.2.1 Project Construction

Project construction could commence as soon as Spring 2019 and would begin with the removal, demolition, and/or deconstruction of the existing site features, including the historic library building, temporary modular building, residential home, appurtenant structures, and landscaping. Rough grading would commence according to the final approved grading plan. Significant ground preparation is not anticipated as the site is already developed and flat. The building would be installed on a shallow concrete foundation and constructed using light-framed construction, with wood or metal stud framed walls and prefabricated wood trusses for the roof framing. The floor would be slab on grade over imported fill. The finished floor elevation would be 18-24-inches above grade to comply with flood zone requirements, similar to the existing Yolo Branch Library and temporary modular building.

The proposed project would be designed and constructed in accordance with California Energy Code (Title 24, Part 6) and California Green Building Standards Code (Title 24, Part 11) in effect at the time the construction contract is executed. The proposed project would be energy efficient, low maintenance, and comfortable, utilize durable, sustainable materials, and include replacement / expansion of the existing rooftop solar power system. The building would also be compliant with Americans with Disabilities Act (ADA) requirements and meet all building code requirements.

S.2.2 Library Operation

The existing Yolo Branch Library operates approximately 21 hours over four days per week on Tuesdays, Wednesdays, Thursdays and Saturdays. The New Yolo Branch Library Building Project would operate on the same schedule to begin with. The YCL is in the process of trying to identify funding resources to operate the new library building five days per week; however, this funding is not guaranteed. If and when funding becomes available, the YCL would conduct a community survey to determine the best days and times of the week to open for additional hours, although this is not anticipated to be a substantial change in operations.

S.2.3 Proposed Yolo Branch Library Description and Features

The proposed New Yolo Branch Library Building Project is intended to address substantial structural and safety issues with the existing Yolo Branch Library building, upgrade and improve existing Yolo Branch Library services, expand the existing book and media collections, and provide a dedicated community meeting space.

The front of the new Yolo Branch Library building would have concrete pedestrian paths, bordered by decomposed granite paths and native, low-impact / drought tolerant ornamental planters. An activity lawn will be located to the north of the building. The interior property lines

would be landscaped with native plants and trees, and ornamental shrubs and plantings would also be planted on the site. The project includes perimeter planters and if necessary, a bioswale in the northwest corner of the site to detain and treat stormwater runoff to ensure the project area maintains pre-development rates and volumes of stormwater contribution to the public system.

The proposed 3,800 square-foot, new library would allow the YCL to upgrade and expand the services offered at the Yolo Branch Library, including:

- Expanded book and media collections;
- Expanded public-use computer stations;
- Study rooms and distinct user group areas for children/family, teens, and adults;
- Central circulation desk and enhanced staffing resources;
- Staff work area for receiving, stocking and cataloging collection items, workspace for program planning and preparation, breakroom kitchenette, and storage;
- Large community room for joint use by library programs and the community;
- Covered outdoor activity area;
- Full accessibility to all public areas for individuals with disabilities;
- Efficient use of daylight, lighting, natural ventilation and heating, ventilation, and air conditioning systems; and
- Opportunity for outdoor gardens, seating and picnic areas, and activity lawn.

The YCL is making a concerted effort to ensure the historic nature – the “look and feel” of the existing Yolo Branch Library Building – is brought into the planning and design of the proposed New Yolo Branch Library Building Project. The YCL has worked with community groups to establish “character defining features” and would continue to work with the community to identify existing building features that would either be salvaged, replicated, interpreted, documented, or demolished as part of the project.

S.2.4 New Yolo Branch Library Building Project Objectives

The YCL’s objectives for the proposed New Yolo Branch Library Building Project are to:

- Eliminate the structural, safety, disability access, and other issues identified at the existing Yolo Branch Library Building;
- Construct a new, larger library building that incorporates the look, feel, character, and history of the existing Yolo Branch Library building and the Town of Yolo;
- Construct a new, larger library building that provides programming flexibility and that can be operated by a limited amount of YCL staff;
- Upgrade and improve Yolo Branch Library services to meet County library operating goals as much as feasible;
- Expand the Yolo Branch Library’s total book and media collections (both storage capacity and actual volume); and
- Provide a dedicated meeting room and/or other space that supports the concept of a library as a community-gathering place.

S.3 SIGNIFICANT IMPACTS AND MITIGATION MEASURES

Consistent with the California Environmental Quality Act (CEQA) and the CEQA Guidelines, this EIR focuses on the potentially significant direct and indirect impacts that could result from

implementation of the New Yolo Branch Library Building Project. This EIR identifies that the proposed New Yolo Branch Library Building Project could result in up to 12 potentially significant environmental impacts in seven different resource areas, as summarized in Table S-1.

The inclusion of mitigation measures into the New Yolo Branch Library Building Project renders 11 of the 12 impacts listed in Table S-1 less than significant; however, one impact pertaining to the demolition of the Yolo Branch Library building, a known historical resource, was found to be a significant, unavoidable impact of the project even with the application of feasible mitigation measures (Impact CUL-1 and Mitigation Measures CUL-1A to CUL-1D).

Impact CUL-1 identifies that implementation of the New Yolo Branch Library Building Project would result in the demolition of the existing Yolo Branch Library building, a known historical resource. The demolition of a historical resource is considered a significant impact under CEQA. Mitigation Measures CUL-1A, CUL-1B, CUL-1C would lessen the potentially significant adverse impact resulting from the demolition of the existing, historic Yolo Branch Library building, and Mitigation Measure CUL-1D would require the YCL to make a good faith attempt to preserve the building for ultimate relocation; however, these measures would not avoid the demolition of the building and the effectiveness of Mitigation Measure CUL-1D is speculative and cannot be guaranteed. Therefore, these measures would not avoid the significant, adverse, material change to the historic Yolo Branch Library building that would occur with implementation of the proposed project. Impact CUL-1, therefore, is considered a significant and unavoidable impact of the proposed project.

Table S-1 Summary of New Yolo Branch Library Building Project Significant Environmental Impacts and Mitigation Measures			
Environmental Impact	Potentially Significant Impact?	Mitigation Measure	Level of Significance After Mitigation
Cultural/Tribal Cultural Resources			
<i>Impact CUL-1: The proposed project would result in the demolition of the existing Yolo Branch Library Building, a known historical resource.</i>	<i>Yes</i>	<p><i>Mitigation Measure CUL-1A: Document and Record the Existing Yolo Branch Library Building</i></p> <p>To identify and ensure the significant physical characteristics of the existing Yolo Branch Library property are documented and retained for public benefit, and to provide an appropriate basis and foundation for the interpretive materials required by Mitigation Measure CUL-1B, the Yolo County Library (YCL) shall, at least 90 days prior to the start of any construction activity, document and record the existing Yolo Branch Library building and property. This documentation and recordation shall:</p> <ol style="list-style-type: none"> 1) Be performed by a qualified historian or architectural historian (a person that meets the U.S. Secretary of the Interior’s minimum education and experience qualifications for these disciplines). 2) Follow the standards of the National Park Service’s (NPS) Historical American Building Survey (HABS) Historical Report Guidelines (to ensure the appropriate level of written and photographic recordation of the property’s significant historic context and character-defining features occurs). Tentatively, the Historical Resource Report prepared for the project by JRP Historical Consulting in June 2018 recommended approximating HABS Level II documentation standards, and include: <ol style="list-style-type: none"> a. Select existing drawings, if available, for photographic documentation; b. Photographs following the NPS photo policy of interior and exterior views of the features, placement, and location of the existing building’s significant physical characteristics, such as, but not limited to: building massing, the intersecting roofline, the porch and porch supports, the asymmetrical divided windows and their hoods, the faux half-timbered gable ends, the deep eaves and exposed rafter tails, the fireplace, the building shelving, and the cove ceiling; c. Photographs following the NPS photo policy of any historic views; and d. Written data providing a history and description of the property. <p>The appropriate HABS documentation standards to guide the documentation and recordation conducted pursuant to this measure shall be determined by the qualified historian/architectural historian retained by the YCL based on the final project plans, and</p>	<i>Significant and Unavoidable</i>

Table S-1 Summary of New Yolo Branch Library Building Project Significant Environmental Impacts and Mitigation Measures			
Environmental Impact	Potentially Significant Impact?	Mitigation Measure	Level of Significance After Mitigation
		<p>appropriate justification shall be provided if something less than HABS Level II documentation is recommended at that time.</p> <p>3) Include, or attempt to discover, additional research and information on the hiring of William H. Weeks and any potential requirements for the building at the time of its design.</p> <p>4) Be retained by the YCL (for public benefit) and offered and/or disseminated to interested parties, which may include, but is not limited to historical organizations, Yolo County Archive, Woodland Public Library, California State Library – History Room, California Historical Society, History San Jose, University of California Environmental Design Archives, Oakland Public Library – Oakland History Room, San Francisco Public Library, and the National Trust for Historic Preservation – Western Office.</p>	
		<p><i>Mitigation Measure CUL-1B: Incorporate Interpretative Materials into the Final Project Design</i></p> <p>To engage the surrounding community and public at large on the meaning and importance of the Yolo Branch Library’s 100-year history, the Yolo County Library (YCL) shall incorporate appropriate interpretative materials into the final project design and/or programming. Appropriate interpretive materials shall be based on the documentation conducted pursuant to Mitigation Measure CUL-1A, and may include, but is not limited to:</p> <p>1) Oral history programs involving the community, library staff, and/or the Friends of the Yolo Branch Library of Yolo that convey information regarding the library and its historic role.</p> <p>2) Interior or exterior signs, panels, or exhibits that provide written, photographic, or physical (i.e., salvaged materials) information about the historic library (e.g., construction date, architectural style, architect of record, etc.).</p> <p>a. Interpretative materials shall focus on specific theme(s) relevant to the Yolo Branch Library, such as the Carnegie library program, the role of library in local education and civic development, the works of William H. Weeks, or other themes determined appropriate by the YCL and the qualified historian/architectural historian that prepared the documentation required by Mitigation Measure CUL-1A.</p> <p>b. Interpretive signs, exhibits, etc. shall be finalized at least 10 days prior to the start of</p>	

Table S-1 Summary of New Yolo Branch Library Building Project Significant Environmental Impacts and Mitigation Measures			
Environmental Impact	Potentially Significant Impact?	Mitigation Measure	Level of Significance After Mitigation
		<p>any construction activities so that materials identified for photographs or salvage may be salvaged, documented, etc. in accordance with the Salvage and Reinterpretation Plan prepared pursuant to Mitigation Measure CUL-1C.</p> <p>3) Other library programming, brochures, booklets, or other written materials provided by the YCL.</p> <p>4) Interpretative materials may include tribal cultural resources information if tribal cultural resources are encountered during construction activities.</p>	
		<p><i>Mitigation Measure CUL-1C: Incorporate Architectural Design Elements of the Existing Yolo Branch Library Building into the New Building Design</i></p> <p>To ensure important architectural design elements associated with the existing Yolo Branch Library building are incorporated into the final design of the new library building, the Yolo County Library (YCL) shall, at least 30 days prior to the start of any construction activities, finalize a Salvage and Reinterpretation Plan for the proposed project. This Salvage and Reinterpretation Plan shall:</p> <p>1) Be prepared by a qualified historian or architectural historian (a person that meets the U.S. Secretary of the Interior’s minimum education and experience qualifications for these disciplines).</p> <p>2) Be developed based on the documentation prepared as part of Mitigation Measure CUL-1A, and other input provided by the YCL, with the intent to bring architectural elements that embody the existing building’s Craftsman style into the new building design.</p> <p>3) Clearly identifies:</p> <ul style="list-style-type: none"> a. What is to be salvaged for reuse; b. How and when in the process the salvage will occur; c. Who is responsible for the salvage; d. Where salvaged material will be stored during construction; e. When and how the salvaged items will be installed in the new building and by whom. <p>4) Uses the Secretary of the Interior’s Standards for the Treatment of Historic Properties as a guide for the treatment of architectural elements, or other appropriate guidelines recommended by the qualified historian/architectural historian that prepares the Salvage</p>	

Table S-1 Summary of New Yolo Branch Library Building Project Significant Environmental Impacts and Mitigation Measures			
Environmental Impact	Potentially Significant Impact?	Mitigation Measure	Level of Significance After Mitigation
		and Reinterpretation Plan. <i>Mitigation Measure CUL-ID: Seek Funding to Preserve and Relocate the Building</i> The Yolo County Library (YCL) shall make a good faith attempt to preserve and relocate the existing, historic Yolo Branch Library building to a different site by soliciting funds / and or advertising the sale of the building at least two times in a newspaper of general circulation within the County. This measure does not commit the County to accept any offer to purchase the building, only to solicit, consider, and evaluate funding or purchase and sale offers that are consistent with the YCL’s objectives for the proposed project. In addition, the receipt of any funds intended for the preservation and relocation of the existing Yolo Branch Library building shall be contingent on the identification of a site suitable for relocation of the building, the relocation of the building in a manner that would not materially impair the building, and a plan for the long-term maintenance and upkeep of the building.	
<i>Impact CUL-2: The proposed project could indirectly adversely affect surrounding historic resources.</i>	<i>Yes</i>	<i>See Mitigation Measure CUL-1A: Document and Record the Existing Yolo Branch Library Building</i> <i>See Mitigation Measure CUL-1B: Incorporate Interpretative Materials into the Final Project Design</i> <i>See Mitigation Measure CUL-1C: Incorporate Architectural Design Elements of the Existing Yolo Branch Library Building into the New Building Design</i> <i>See Mitigation Measure CUL-ID: Seek Funding to Preserve and Relocation the Building</i>	<i>Less than Significant</i>
<i>Impact CUL-3: Project construction could disturb unrecorded historical, archaeological, paleontological, and tribal cultural resources and/or unrecorded human remains.</i>	<i>Yes</i>	<i>Mitigation Measure CUL-3A: Provide Cultural Resource, Tribal Cultural Resource, and Human Remains Awareness Training</i> To ensure appropriate construction crews and personnel are aware of the potential for the New Yolo Branch Library Building Project to encounter unrecorded cultural resources (i.e., historical, archaeological, and paleontological resources), tribal cultural resources, and/or human remains, the Yolo County Library shall provide pre-construction training to all construction personnel involved in supervising or performing ground disturbing activities (site clearing, excavation work, grading, and trenching). This pre-construction training shall: 1) Be conducted by a qualified archaeologist (an archaeologist that meets the U.S. Secretary of the Interior’s minimum education and experience qualifications for archaeology) and/or a Yocha Dehe Wintun Nation monitor.	<i>Less than Significant</i>

Table S-1 Summary of New Yolo Branch Library Building Project Significant Environmental Impacts and Mitigation Measures			
Environmental Impact	Potentially Significant Impact?	Mitigation Measure	Level of Significance After Mitigation
		<p>2) Educate and inform construction personnel on:</p> <ul style="list-style-type: none"> a. The types of unrecorded resources that may be encountered during ground disturbing activities; b. How to identify potential resources (i.e., what visual and other evidence to be aware of); and c. The measures to implement if a potential resource is encountered or suspected to have been encountered. <p><i>Mitigation Measure CUL-3B: Monitor for the Discovery of Cultural Resources and Tribal Cultural Resources</i></p> <p>To ensure potential unrecorded resources are protected, the Yolo County Library (YCL) shall monitor all ground disturbing activities (site clearing, excavation work, grading, and trenching) for the discovery of unrecorded resources. This monitoring shall be conducted by a qualified archaeologist (an archaeologist that meets the U.S. Secretary of the Interior’s minimum education and experience qualifications for archaeology) and/or a Yocha Dehe Wintun Nation monitor.</p> <ul style="list-style-type: none"> 1) The frequency of monitoring by the qualified archaeologist shall be determined by the YCL, in consultation with the qualified archaeologist, once the final project design is approved. The frequency of this monitoring shall consider: <ul style="list-style-type: none"> a. The ground-disturbing activities associated with the final project design; b. The lack of recorded sub-surface cultural resources within the proposed project area; c. The experience of the construction crew and personnel in responding to the discovery of unrecorded cultural resources; and d. The frequency with which the Yocha Dehe Wintun Nation monitor will be on-site to monitor for cultural resources training. 2) The frequency of the monitoring by the Yocha Dehe Wintun Nation shall be determined in consultation with the Yocha Dehe Wintun Nation and as set forth in the Monitoring Agreement by and between the Yocha Dehe Wintun Nation and the County stipulated under Mitigation Measure CUL-3D. 3) The YCL shall ensure both the qualified archaeological monitor and the Yocha Dehe Wintun Nation monitor shall have the authority to stop work in the event a cultural 	

Table S-1 Summary of New Yolo Branch Library Building Project Significant Environmental Impacts and Mitigation Measures			
Environmental Impact	Potentially Significant Impact?	Mitigation Measure	Level of Significance After Mitigation
		<p>resource or tribal cultural resource is discovered during project construction.</p> <p>4) As part of this measure, the YCL may authorize a pre-construction site inspection for cultural resources and/or tribal cultural resources by the qualified archaeologist and/or Yocha Dehe Wintun Nation monitor.</p> <p>5) At the conclusion of the monitoring effort, the qualified archaeologist shall submit a report meeting the Secretary of the Interior’s Standards detailing the findings of the monitoring (including monitoring performed by the Yocha Dehe Wintun Nation monitor) to the Northwest Information Center for recordation purposes.</p>	
		<p><i>Mitigation Measure CUL-3C: Use Equipment that Minimizes Potential Adverse Effects on Unrecorded Cultural Resources and Tribal Cultural Resources</i></p> <p>To reduce the potential for equipment to inadvertently adversely affect unrecorded cultural resources and tribal cultural resources, the Yolo County Library shall require all excavating machinery to use toothless buckets during ground disturbing activities (site clearing, excavation work, grading, and trenching).</p>	
		<p><i>Mitigation Measure CUL-3D: Yocha Dehe Wintun Nation Monitoring Agreement</i></p> <p>At least 30 days prior to the start of construction activities, the Yolo County Library shall finalize a monitoring agreement with the Yocha Dehe Wintun Nation that stipulates:</p> <ol style="list-style-type: none"> 1) The frequency of monitoring of a Yocha Dehe Wintun Nation monitor; 2) A protocol for the treatment and disposition of tribal cultural resources discovered during project construction (e.g., temporary storage by the County, repatriation of the resource in an appropriate location); 3) A protocol for the treatment and disposition (e.g., a reburial plan) of Native American human remains (which may include only grave goods); 4) Ownership control of any tribal cultural resource discovered during project construction; 5) Other terms and measures recommended by the Yocha Dehe Wintun Nation and agreed to by the County. 	
		<p><i>Mitigation Measure CUL-3E: Minimize and Avoid Impacts to Unrecorded Cultural Resources and Tribal Cultural Resources</i></p> <p>In the event that unrecorded cultural resources (historical, archaeological, or paleontological</p>	

Table S-1 Summary of New Yolo Branch Library Building Project Significant Environmental Impacts and Mitigation Measures			
Environmental Impact	Potentially Significant Impact?	Mitigation Measure	Level of Significance After Mitigation
		<p>resources) or tribal cultural resources are discovered (or have been suspected to have been discovered) during project construction, the Yolo County Library, its qualified archaeologist, and/or the Yocha Dehe Wintun Nation monitor shall:</p> <ol style="list-style-type: none"> 1) Treat any potential cultural, historical, tribal and paleontological material as a resource to be protected until determined otherwise by appropriate personnel. 2) Ensure that no potential resource is removed or damaged by project personnel. 3) Stop all ground-disturbing work (e.g., excavation, piling, foundation removal, etc.) on-site to avoid altering the material and its context in any way, and immediately (within 24 hours) evaluate the resource for its cultural/tribal cultural importance. No ground-disturbing work shall be allowed to continue until the qualified archaeologist and/or the Yocha Dehe Wintun Nation monitor has fully evaluated the find and permits work to continue. Depending on this evaluation, archaeological excavation and recordation of the discovered may be required before construction can continue. 	
		<p><i>Mitigation Measure CUL-3F: Minimize and Avoid Impacts to Unrecorded Human Remains</i></p> <p>In the event that unrecorded human remains are discovered (or have been suspected to have been discovered) during project construction, the measures specified in Section 15064.5(e)(1) of the California Environmental Quality Act Guidelines shall be followed by the Yolo County Library, its qualified archaeologist, and/or the Yocha Dehe Wintun Nation monitor:</p> <ol style="list-style-type: none"> 1) There shall be no further excavation or disturbance of the site or any nearby area reasonably suspected to overlie adjacent human remains until: <ol style="list-style-type: none"> a. The Yolo County coroner is contacted to determine that no investigation of the death is required; and b. If the coroner determines the remains to be Native American, the Coroner shall contact the Native American Heritage Commission (NAHC) within 24 hours. The NAHC shall identify the person or persons it believes to be most likely descended from the deceased Native American. The most likely descendent may make recommendations to the landowner or the person responsible for the excavation work, for means of treating or disposing of, with appropriate dignity, the human 	

Table S-1 Summary of New Yolo Branch Library Building Project Significant Environmental Impacts and Mitigation Measures			
Environmental Impact	Potentially Significant Impact?	Mitigation Measure	Level of Significance After Mitigation
		<p>remains and any associated grave goods as provided in Public Resources Code Section 5097.98; or,</p> <p>c. If the NAHC cannot identify the most likely descendants (MLD), the MLD fails to make a recommendation, or the property owner rejects the MLD’s recommendations, the property owner can rebury the remains and associated burial goods with appropriate dignity in an area not subject to ground disturbance.</p>	
Aesthetics			
<i>Impact AES-1: The proposed project could change the existing visual character and quality of the site and its surroundings.</i>	<i>Yes</i>	<p><i>Mitigation Measure AES-1A: Controlled Burn Coordination and Clean-Up</i></p> <p>To avoid potential adverse aesthetic impacts associated with the Yolo Fire Protection District’s potential controlled burn training exercise on the existing residential structure at 14184 2nd Street, the Yolo County Library shall coordinate with the Yolo Fire Protection District to ensure:</p> <ol style="list-style-type: none"> 1) Any structural remains are deconstructed and removed from the site in a timely manner, i.e., as soon as is safely possible; and 2) The site is cleaned-up and prepared for construction activities or restored as soon as is safely possible. 	<i>Less than Significant</i>
		<p><i>Mitigation Measure AES-1B: Consider the Location and Aesthetic Appeal of Potential Interpretive Materials in the Final Project Site Plan and Design</i></p> <p>If Mitigation Measure CUL-1B results in the installation of interpretive materials outside the new Yolo Branch Library building (e.g., signage), the Yolo County Library shall:</p> <ol style="list-style-type: none"> 1) Consider the location and aesthetic appeal of the interpretive materials in the final project site plan and design; 2) Ensure the size and scale of the interpretive materials are appropriate for their location and intent as a focal (or non-focal) point of interest; 3) Aim to incorporate any interpretive materials as an art or other special design treatment that enhances the new library site and its identity. 	

Table S-1 Summary of New Yolo Branch Library Building Project Significant Environmental Impacts and Mitigation Measures			
Environmental Impact	Potentially Significant Impact?	Mitigation Measure	Level of Significance After Mitigation
		<p><i>Mitigation Measure AES-1C: Incorporate Character-Defining Architectural Elements of the Existing Yolo Branch Library into the New Library Design.</i></p> <p><i>See Mitigation Measure CUL-1C: Incorporate Architectural Design Elements of the Existing Yolo Branch Library Building into the New Building Design.</i></p>	
Air Quality			
<p><i>Impact AIR-1: Implementation of the New Yolo Branch Library Building Project would generate emissions of criteria air pollutants, toxic air contaminants, and odors.</i></p>	<p><i>Yes</i></p>	<p><i>Mitigation Measure AIR-1A: Reduce Fugitive Dust Emissions</i></p> <p>To reduce potential fugitive dust that may be generated by the New Yolo Branch Library Building Project during building demolition, site preparation, and building construction activities, the Yolo County Library shall implement the following Yolo-Solano Air Quality Management District-recommended best management practices for controlling fugitive dust:</p> <ol style="list-style-type: none"> 1) Water all exposed surfaces (e.g., staging areas, soil piles, graded areas, and unpaved access roads) two times per day during construction and adequately wet demolition surfaces to limit visible dust emissions. 2) Cover or maintain at least two feet of freeboard for all haul trucks transporting soil, sand, or other loose materials off the project site or 3) Sweep streets if visible soil material is carried out from the construction site. 4) Apply non-toxic binders (e.g., latex acrylic copolymer) to exposed areas after cut-and-fill operations and hydroseed area. 5) Apply chemical soil stabilizers on inactive construction areas (disturbed lands within construction projects that are unused for at least four consecutive days). 6) Minimize idling time of diesel powered construction equipment to five minutes and post signs reminding workers of this idling restriction at access points and equipment staging areas during construction of the proposed project. 	<p><i>Less than Significant</i></p>
		<p><i>Mitigation Measure AIR-1B: Controlled Burn Notification and Coordination</i></p> <p>To reduce potential adverse air quality and odor impacts associated with the Yolo Fire Protection District’s potential controlled burn training exercise, the Yolo County Library shall:</p> <ol style="list-style-type: none"> 1) Ensure the potential controlled burn occurs in compliance with Yolo-Solano Air Quality Management District (YSAQMD) Rule 2-8, Open Burning, General. 	

Table S-1 Summary of New Yolo Branch Library Building Project Significant Environmental Impacts and Mitigation Measures			
Environmental Impact	Potentially Significant Impact?	Mitigation Measure	Level of Significance After Mitigation
		2) Coordinate with the Yolo Fire Protection District and the YSAQMD to ensure the controlled burn occurs under meteorological conditions that aid dispersion of potential odors and smoke away from the community and towards uninhabited surroundings; 3) Coordinate with the Yolo Fire Protection District and YSAQMD to develop precautions and recommendations the neighboring community, especially nearby sensitive receptors, can undertake to protect themselves from potential nuisances resulting from smoke.	
Biological Resources			
<i>Impact BIO-1: The proposed project could cause adverse impacts to nesting birds and roosting bats.</i>	<i>Yes</i>	<i>Mitigation Measure BIO-1A: Avoid and Minimize Impacts on Nesting Birds</i> To avoid impacts to nesting birds and the potential violation of state and federal laws pertaining to birds, the Yolo County Library (YCL) shall implement the following measures: 1) Schedule construction-related activities (including but not limited to mobilization and staging, clearing, grubbing, vegetation removal, fence installation, demolition, and grading) to occur outside the avian nesting season (that is, prior to February 1 or after August 31) as much as feasible given scheduling, budget, and other logistical concerns (e.g., rainy season concerns). 2) If construction-related activities are scheduled to occur within the avian nesting season (the nesting season is defined as the period of time from February 1 to August 31), a qualified wildlife biologist shall conduct a nesting bird survey no more than five day days before the start of any equipment mobilization and/or site disturbance. a. This pre-construction nesting bird survey shall evaluate all suitable habitat within 50 feet (for passerines) and 250 feet (for raptors) of the project site boundary for the presence of active nests. Active nesting shall be considered present if a bird is sitting in a nest, a nest has eggs or chicks in it, or adults are observed carrying food to the nest. b. If the start of construction-related activities is delayed by more than five days from the date of the survey, an additional pre-construction nesting bird survey shall be performed. 3) If the pre-construction nesting bird survey conducted under part 2) above confirms the	<i>Less than Significant</i>

Table S-1 Summary of New Yolo Branch Library Building Project Significant Environmental Impacts and Mitigation Measures			
Environmental Impact	Potentially Significant Impact?	Mitigation Measure	Level of Significance After Mitigation
		<p>presence of active nest, the location of all such nests shall be added to project site plan and grading plan, or otherwise depicted on a map, along with the following buffers zones:</p> <ol style="list-style-type: none"> a. 50 feet for active passerine nests b. 250 feet for active raptor nests c. A different buffer as determined by a qualified biologist in consultation with the California Department of Fish and Wildlife <p>No mobilization of heavy equipment or site disturbance (including but not limited to equipment staging, fence installation, clearing, grubbing, vegetation removal, demolition, or grading), shall take place within the identified buffer zones until the chicks have fledged. A qualified biologist shall monitor construction activities to ensure compliance with buffer zones and the provisions of the Migratory Bird Treaty Act and relevant California Fish and Game Code requirements.</p> <ol style="list-style-type: none"> 4) If the pre-construction nesting bird survey conducted under Part 2) above confirms the absence of active nests, no further mitigation shall apply provided construction-related activities start within five days of the completion of the pre-construction survey (see Part 2b above). 5) If the Yolo HCP/NCCP is approved and in effect prior to project approval, the YCL shall conform to its requirements regarding pre-construction surveys and other avoidance and minimization measures that are applicable to any covered bird species that may be present at or near the site. To the extent the Yolo HCP/NCCP contains survey or other requirements that are stricter than those set forth above, its requirements shall govern. The YCL shall adhere to the requirements of the Yolo HCP/NCCP relating to species mitigation once it is in effect. 	
		<p><i>Mitigation Measure BIO-1B: Avoid and Minimize Impacts on Roosting Bats</i></p> <p>To avoid impacts to roosting bats and the potential violation of state laws pertaining to bats, the Yolo County Library (YCL) shall implement the following measure:</p> <ol style="list-style-type: none"> 1) A qualified wildlife biologist shall conduct an on-site pre-construction survey for maternity (the maternity season is defined as the period of time from March 1 to August 1) or colony bat roosts (year-round) no more than 7 days prior to the initial removal of 	

Table S-1 Summary of New Yolo Branch Library Building Project Significant Environmental Impacts and Mitigation Measures			
Environmental Impact	Potentially Significant Impact?	Mitigation Measure	Level of Significance After Mitigation
		<p>any trees or structures on the project site. This pre-construction survey shall include an inspection for signs of bats (including sightings of live or dead bats, grease or urine stains around openings in trees or structures, or flies around such openings, and bat droppings), bat calls or squeaking, and bat-related odors. Trees with multiple hollows, crevices, forked branches, woodpecker holes or loose and flaking bark have the highest chance of occupation and shall be inspected the most carefully.</p> <ol style="list-style-type: none"> a. If the removal of trees or structures from the project site is delayed by more than seven days from the date of the survey, an additional pre-construction bat survey shall be performed. b. If the pre-construction survey detects the presence of an occupied maternity or colony roost, the YCL and/or the qualified biologist shall contact the California Department of Fish and Wildlife regarding how to proceed with building demolition. Typically, an exclusionary buffer zone would be established around each occupied roost until bat activities have ceased. The size of the buffer would take into account the proximity of construction activities, noise level associated with construction activities, and species-specific needs, if known, such as sensitivity to disturbance. c. If the pre-construction survey does not detect the presence of an occupied maternity or colony roost, nor further mitigation shall apply. <p>2) Due to restrictions established by the California Department of Public Health, direct contact by workers with any bat is not allowed. The YCL shall contact a qualified bat biologist immediately if a bat or bat roost is discovered or encountered during project construction.</p>	
Hazards and Hazardous Materials			
<i>Impact HAZ-1: Construction of the proposed New Yolo Branch Library Building Project could result in the release or potential</i>	<i>Yes</i>	<p><i>Mitigation Measure HAZ-1A: Minimize and Avoid Impacts from Unanticipated Hazardous Materials</i></p> <p>In the event unanticipated contamination or hazardous materials are discovered during project construction (e.g., gasoline odors, or oily soil or water), the Yolo County Library shall:</p> <ol style="list-style-type: none"> 1) Stop all work immediately, contact the Department of Environmental Health, and take appropriate investigative and/or remedial action to adequately characterize the 	<i>Less than Significant</i>

Table S-1 Summary of New Yolo Branch Library Building Project Significant Environmental Impacts and Mitigation Measures			
Environmental Impact	Potentially Significant Impact?	Mitigation Measure	Level of Significance After Mitigation
<i>release of hazardous materials that pose a risk to human health and/or the environment.</i>		contamination and ensure the release or potential release of hazardous materials would not pose a significant threat to human health and/or the environment. 2) Construction may proceed if, after coordinating with the Department of Environmental Health, it is determined activities would not affect the release or potential release of a hazardous material.	
		<i>Mitigation Measure HAZ-1B: Minimize and Avoid Potential Impacts from Lead Paint and Asbestos-Containing Building Materials</i> Prior to the start of any building demolition activity, the Yolo County Library (YCL) shall: 1) Hire a qualified inspector(s) to survey the building for potential lead paint and asbestos containing materials. a. If lead or asbestos is found, the YCL shall remove the materials from the building to the extent feasible and in accordance with all applicable regulations, such as Yolo Solano Air Quality Management District (YSAQMD) Regulation 9, Rule 9, Asbestos. b. If it is not feasible to remove or strip materials out of the building (e.g., asbestos containing concrete), the YCL shall ensure emissions of lead and /or asbestos are captured and prevented from being released into the outside air by sufficiently wetting the material, providing HEPA exhaust, ventilation, collection of emissions, or other equivalent method. 2) Ensure lead and asbestos containing materials are properly disposed of and transported to an appropriate waste disposal facility 3) Submit a written plan or notification of intent to demolish the structures in the project area to the YSAQMD at least 10 working days prior to the start of demolition activities, in accordance with YSAQMD Regulation 9, Rule 9.	
		<i>Mitigation Measure HAZ-1C: Minimize and Avoid Potential Impacts Associated with the Potential Controlled-Burn Training Exercise</i> In the event the YCL (YCL) and the Yolo Fire Protection District agree to undertake a controlled-burn, the YCL shall: 1) Ensure the Yolo Fire Protection District complies with the requirements of Mitigation	

Table S-1 Summary of New Yolo Branch Library Building Project Significant Environmental Impacts and Mitigation Measures			
Environmental Impact	Potentially Significant Impact?	Mitigation Measure	Level of Significance After Mitigation
		<p>Measure AIR-1B;</p> <p>2) Coordinate with the Yolo Fire Protection District to undertake the training exercise at a time that minimizes impacts on the surrounding community by considering:</p> <ol style="list-style-type: none"> a. Forecast meteorological conditions b. Whether Cache Creek High School is in session or planning an outdoor event on the day of the exercise <p>3) Provide written notification to properties within 500 feet of the project area that:</p> <ol style="list-style-type: none"> a. Lists the date and time of the training exercise; b. Explains the protective measures being implemented to control and reduce potential risks from the training exercise, which may include, but are not limited to, the removal of asbestos- and/or lead-containing building materials in compliance with Yolo-Solano Air Quality Management District requirements and Mitigation Measure HAZ-1B and the removal of all other potentially hazardous household substances (e.g., stored motor oil, etc.) prior to the training exercise. c. Provides the name and contact information of a YCL and/or Yolo Fire Protection District for people to call with questions regarding the training exercise. 	
		<p><i>Mitigation Measure HAZ-1D: Minimize and Avoid Impacts from Equipment Leaks and Spills</i></p> <p>The Yolo County Library shall minimize and avoid potential leaks and spills from heavy construction equipment used during demolition, site preparation, and building construction activities by:</p> <ol style="list-style-type: none"> 1) Designating vehicle and equipment storage, staging, and clean-up locations. 2) Designating equipment fueling locations and ensuring appropriate spill containment measures and spill response equipment is on-site. 3) Inspecting equipment for leaks prior to and at the conclusion of daily construction activities. If leaks are observed, the leaking equipment shall be repaired immediately. All contaminated water, sludge, spill residue, or other hazardous compounds discovered during inspections shall be contained and disposed of, as necessary, at lawfully permitted or authorized disposal sites. 	

Table S-1 Summary of New Yolo Branch Library Building Project Significant Environmental Impacts and Mitigation Measures			
Environmental Impact	Potentially Significant Impact?	Mitigation Measure	Level of Significance After Mitigation
Hydrology and Water Quality			
<i>Impact HYD-1: Construction activities associated with the proposed New Yolo Branch Library Building Project could result in erosion, siltation and other temporary hydrology and water quality impacts.</i>	<i>Yes</i>	<p><i>Mitigation Measure HYD-1: Avoid and Minimize Polluted Storm Water Runoff During Construction Activities</i></p> <p>To reduce potential construction-related hydrology and water quality impacts, the Yolo County Library, in coordination with the Department of Public Works, shall prepare a Stormwater, Erosion, and Sediment Control Plan (Plan) to minimize the potential for polluted runoff during construction. The Plan shall be consistent with Section 11, Stormwater Quality, Erosion, and Sediment Control, of the County of Yolo Improvement Standards, and shall identify:</p> <ol style="list-style-type: none"> 1) The proposed construction sequence for the project, including any potential controlled burn training exercises requested by the Yolo Fire Protection District; 2) A list of good housekeeping and/or Best Management Practices (BMPs) sufficient to control and minimize potential erosion, transport of sediment and debris off-site, and adverse effects of equipment leaks or spills to the maximum extent practicable (e.g., preserving vegetation, stabilizing disturbed surfaces with hydroseeding or soil binders, perimeter controls such as waddles or silt fencing, monitoring of stormwater flows, etc.); 3) Specific controls recommended by the Yolo Fire Protection District for ash, soot, and other debris or waste generated from any potential controlled-burn training exercise; 4) The entity responsible for implementing all stormwater, erosion, and sediment controls identified in the Plan. 	<i>Less than Significant</i>
<i>Impact HYD-2: Operation of the New Yolo Branch Library Building Project could cause or contribute to potential sources of polluted runoff.</i>	<i>Yes</i>	<p><i>Mitigation Measure HYD-2: Ensure Final Project Design Avoids and Minimizes Polluted Storm Water Runoff</i></p> <p>To reduce potential hydrology and water quality impacts from project operation, the Yolo County Library shall prepare a Storm Water Control Plan that, at a minimum:</p> <ol style="list-style-type: none"> 1) Identifies the total impervious / pervious surface areas associated with the final site design and layout for the proposed project; 2) Ensures the final project design includes storm water treatment areas (e.g., bioswales, planter boxes, etc.) that are appropriately sized for the project. The treatment areas shall treat runoff by filtering it through a series of strata such as engineered permeable soil, pea gravel, and/or drain rock before directing it out to the public storm drain system via 	<i>Less Than Significant</i>

Table S-1 Summary of New Yolo Branch Library Building Project Significant Environmental Impacts and Mitigation Measures			
Environmental Impact	Potentially Significant Impact?	Mitigation Measure	Level of Significance After Mitigation
		<p>perforated sub drain piping. The treatment areas shall effectively remove trash and sediment from runoff water before it is conveyed to the storm drain system, and shall reduce runoff volumes by impounding storm water and encouraging infiltration, evaporation and evapotranspiration from vegetation.</p> <p>3) Identifies the Low Impact Development (LID) design details incorporated into the project. Specific LID design may include, but is not limited to: using pervious pavements and green roofs, dispersing runoff to landscaped areas, and/or routing runoff to rain gardens, cisterns, swales, and other small-scale facilities distributed throughout the site.</p> <p>4) Ensures that all exterior garbage bins and receptacles are appropriately contained and kept closed when not in immediate use.</p>	
<i>Impact HYD-3: The proposed New Yolo Branch Library Building would be located within a special flood hazard area (Zone A) delineated on the applicable Federal Emergency Management Agency Flood Insurance Rate Map.</i>	<i>Yes</i>	<p><i>Mitigation Measure HYD-3: Raise Final Building Locations above the Base Flood Elevation</i></p> <p>To reduce potential flooding impacts associated with the Federal Emergency Management Association Flood Rate Insurance Map special flood hazard area Zone A, the Yolo County Library shall, prior to the final project design, verify the base flood elevation for the project site and raise the lowest finished floor elevation of the new library building at least one foot above the base flood elevation.</p>	<i>Less than Significant</i>
Noise			
<i>Impact NOI-1: Implementation of the New Yolo Branch Library Building Project</i>	<i>Yes</i>	<p><i>Mitigation Measure NOI-1A: Reduce Potential Temporary Construction Noise Impacts</i></p> <p>To reduce potential temporary, construction-related noise levels at sensitive residential receptors, the Yolo County Library (YCL) shall, to the maximum extent feasible:</p> <p>1) Restrict construction activities to the hours of 7:00 AM to 6:00 PM, Monday through Friday and 9:00 AM to 6:00 PM on Saturday. Construction activities on Sunday shall be</p>	<i>Less than Significant</i>

Table S-1 Summary of New Yolo Branch Library Building Project Significant Environmental Impacts and Mitigation Measures			
Environmental Impact	Potentially Significant Impact?	Mitigation Measure	Level of Significance After Mitigation
<i>would generate temporary, construction-related noise and vibration.</i>		prohibited. a. The YCL shall, to the maximum extent feasible, prohibit non-critical construction-related deliveries from occurring before 7:00 AM. b. Deliveries related to critical path construction activities that require timely completion to keep the project on schedule and budget, such as, but not limited to, concrete deliveries for pouring a concrete pad, specialized equipment rentals, etc., may occur prior to 7:00 AM; however, the YCL shall, to the maximum extent feasible, minimize such deliveries. 2) At least 10 days prior to the start of construction activities, provide a written notice to sensitive noise receptors within 250 feet of the project area that describes the approximate start date and schedule for the construction activities and a contact name and phone number for the construction contractor and/or YCL staff person responsible for handling construction-related noise complaints. 3) Phase demolition activities to take advantage of the noise shielding provided by existing structures (i.e., start from the side of the building the farthest away from nearby sensitive receptors and consider removing the Yolo Branch Library building first, before the residence). 4) Provide electrical hook-up to the construction site and prohibit the use of diesel-powered generators to the extent it is logistically and technically feasible to do so. 5) Impact tools such as jack hammers shall be hydraulically or electrically powered wherever possible to avoid noise associated with compressed air exhaust from pneumatically powered tools. When use of pneumatic tools is unavoidable, they shall include a noise suppression device on the compressed air exhaust.	
		<p><i>Mitigation Measure NOI-1B: Reduce Potential Temporary Construction Vibration Impacts</i></p> <p>To reduce potential temporary, construction-related vibration levels at sensitive residential receptors, the Yolo County Library (YCL) shall, to the maximum extent feasible:</p> 1) Prohibit the operation of vibratory rollers, plate compactors, and other large compaction equipment within 15 feet of all adjacent residential structures. 2) If it is not feasible to avoid the operation of large compaction equipment within 15 feet of	

Table S-1 Summary of New Yolo Branch Library Building Project Significant Environmental Impacts and Mitigation Measures			
Environmental Impact	Potentially Significant Impact?	Mitigation Measure	Level of Significance After Mitigation
		adjacent residential structures, the YCL shall develop and implement a Vibration Mitigation Plan that identifies the vibration control measures the construction contractor would take to ensure construction does not damage any adjacent residential structure. Such measures may include the use of before and after photos, vibration monitoring, barriers, pre-compaction activities, use of smaller equipment, or other measures that limit groundborne vibration to levels that would not result in structural damage (approximately 0.5 inches per second peak particle velocity).	
<i>Impact NOI-2: The new Yolo Branch Library building could result in temporary and periodic increase in noise levels associated with use of the library's community room.</i>	<i>Yes</i>	<i>Mitigation Measure NOI-2: Reduce Potential Community Meeting Noise</i> To reduce potential community meeting noise levels, the Yolo County Library shall incorporate, as part of a reservation or other agreement, a condition stipulating community meetings shall conclude no later than 9 PM and a condition stipulating the use of amplified sound devices (megaphones, portable public address systems) are prohibited during meetings. This condition shall not apply to small portable radios or other media players that are used in conjunction with a presentation or other planned meeting activity.	<i>Less than Significant</i>

S.4 ALTERNATIVES TO THE PROPOSED PROJECT

S.4.1 Alternatives Considered and Rejected

The YCL considered and rejected the following alternatives to the proposed project:

Rehabilitate the Existing Yolo Branch Library Building

The YCL considered rehabilitating the existing 1,000 square-foot Yolo Branch Library Building to a condition that is suitable for re-occupation and long-term use as a library. While this alternative could avoid the proposed project's significant and unavoidable impact on the Yolo Branch Library building, the YCL rejected this alternative because it would be economically inefficient and cost prohibitive and would not achieve most of the basic objectives of the project. In particular, under this alternative, the rehabilitated library building would continue to fall well below County goals for square footage per capita, volume per capita, and computer access.

Expand the Existing Yolo Branch Library Building

The YCL considered rehabilitating and expanding the Yolo Branch Library by constructing an approximately 2,000 to 3,000 square-foot addition onto the existing historic building. The existing Yolo Branch Library building has significant structural, fire and life safety, plumbing, electrical, roofing, interior/exterior deferred maintenance, and ADA compliance concerns; these concerns pose a clear and present risk of building collapse and have led the YCL to vacate the existing building. To retain the historical status of the existing library building, the YCL, in addition to following the California Historical Building Code, would need to rehabilitate the library in accordance with the Secretary of the Interior's Standards for Rehabilitation. These constraints, on top of the costs associated with the new construction, render the Expand the Existing Yolo Branch Library Building Alternative substantially more expensive than the proposed project; a preliminary construction cost analysis prepared by WMB Architects and the County for this alternative estimated the costs associated with expanding the library building to be approximately 20.1% higher than the proposed project due to planning, design, and historical resource integration considerations. Thus, this alternative was rejected because it would be economically infeasible. In addition, this alternative would achieve only some of the project's objectives. Finally, while this alternative would likely substantially lessen or avoid the significant and unavoidable impact of the proposed project on the historic Yolo Branch Library building, it could result in a more severe aesthetics/visual resources impact based on the community input received on the project by the YCL to date.

Preserve the Existing Yolo Branch Library Building

The YCL considered preserving the existing, approximately 1,000 square-foot Yolo Branch Library building in its present location. As explained above, the existing Yolo Branch Library building has significant structural, fire and life safety, plumbing, electrical, roofing, interior/exterior deferred maintenance, and ADA compliance concerns; these concerns pose a clear and present risk of building collapse and have led the YCL to vacate the existing building. For the purposes of this alternative, the YCL would improve the existing building enough to prevent the potential collapse of the building in a strong earthquake or wind storm; however, the YCL would not re-occupy or re-open the building. Branch library services would either continue to be served out of the existing modular building or moved to a different site.

The YCL considered the preservation of the existing library building as a historical resource, but not as a functional library, and concluded this option was cost prohibitive and thus economically infeasible. In addition, it does not improve library services or meet library service goals, and was therefore rejected because it would not meet most of the basic objectives of the project.

Alternative Site Locations

The YCL considered constructing a new library at a different location in or near the Town of Yolo. Under this alternative, the existing Yolo Branch Library building would remain on-site, but vacant, and the temporary modular building would be removed (and returned to the vendor). The YCL would not make any improvements to the existing library building which, presumably, would continue to deteriorate in condition or ultimately be removed due to liability and safety reasons.

Several potential sites were identified, but ultimately deemed economically infeasible due to existing site constraints and the cost to upgrade the existing buildings to current standards, which were calculated at approximately 23 to 28 percent higher than construction of a new building at the existing library site.

While a new library building at an alternate location would likely meet most of the objectives the YCL has set for the proposed project, it would not avoid or substantially lessen the significant and unavoidable impact of the proposed project because continued deterioration of the existing building would ultimately materially impair the historical significance of the Yolo Branch Library building.

The YCL, therefore, considered but rejected this alternative because it would be economically infeasible and would not avoid or substantially lessen the significant and unavoidable impact of the proposed project.

Temporary Service Options

The YCL considered other options for providing temporary library services, including joint use of the adjacent Yolo Fire Station or the Cache Creek High School; however, these options would not meet any of the objectives the YCL has set for the project. In addition, these options would not avoid or substantially lessen the significant and unavoidable impact of the proposed project because continued deterioration of the existing building would ultimately materially impair the historical significance of the property. This would be exacerbated by the fact that if the existing Yolo Branch Library property is not used by the County as a public library, the property would be deeded back to the prior land owners.

S.4.2 No Project Alternative

Under the No Project Alternative, the proposed New Yolo Branch Library Building Project would not be constructed or operated. In the short-term, the YCL would retain all existing site features including the existing historic library, temporary modular library building, adjacent residential building, and associated paving and landscaping. In addition, interim library services would continue to be provided out of the leased temporary modular building. The YCL would then need to conduct a long-term feasibility study evaluating the cost effectiveness of operating this way. If the feasibility study identified significant costs to continue utilizing the temporary modular building, library services would be suspended or consolidated. Eventually, it is likely the YCL could propose another, similar, library building project to address a permanent solution

to abandoning the existing historic library building, but it is unknown how long it would be before the County proposed another library building project, where it would be located, and exactly what features would be included in it. Under this alternative, the existing library would be minimally maintained, but would not be reinforced to prevent collapse.

The No Project Alternative would obtain none of the objectives the YCL has set for the proposed project. It would not address the substantial structural and safety issues associated with the existing building, nor result in a new structure that links modern library services to the historical building. It would also not upgrade or improve the branch library's service goals, or provide a community meeting space.

The No Project Alternative would eliminate the potentially significant impacts associated with construction of the proposed project and would also avoid the proposed project's operational hydrology and water quality and noise impacts, since it would not change the existing site conditions or result in expanded use of the library by the community. Under the No Project Alternative, however, the existing library would continue to deteriorate. At some point, the YCL would likely need to remove the library to reduce safety risks and liability associated with the collapse because interim library services and visitors would continue to occur at the site.

In the short-term, the No Project Alternative would avoid the proposed project's potentially significant aesthetic/visual resource impact, potentially significant indirect adverse effect on surrounding historic properties, and significant and unavoidable impact on the historic Yolo Branch Library. In the long-term, if the existing library building continued to deteriorate, or if the YCL could not sustain interim library services from the temporary modular building and was forced to cede the property back to the original owner, the No Project Alternative would not avoid or substantially lessen the significant and unavoidable impact to the Yolo Branch Library building that would occur under the proposed project.

As described above, the No Project Alternative would not achieve any of the objectives the YCL has set for the proposed project and, while this alternative may avoid or substantially lessen the significant and unavoidable impact to the historic library building that would occur under the proposed project in the short-term, it would not avoid or substantially lessen this significant and unavoidable impact in the long-term.

S.4.3 Reduced Project Alternative

Under the Reduced Project Alternative, the YCL would demolish and replace the existing, approximately 1,000 square-foot Yolo Branch Library building and the adjacent residence at 14184 2nd Street with a new, approximately 2,000 to 2,500 square-foot library building. Under this alternative, the new library would be slightly larger than the existing library but would not contain dedicated community meeting space.

The Reduced Project Alternative would obtain some of the objectives the YCL has set for the proposed project. It would address the substantial structural and safety issues associated with the existing building, result in a larger library building that likely could be operated by limited staff, upgrade and improve the branch library's service metrics, and expand the branch library's media collections, although not to the same extent as the proposed project. The Reduced Project Alternate would not, however, include a dedicated community meeting room.

The Reduced Project Alternative would not eliminate the potentially significant impacts with construction of the proposed project, nor would it avoid the proposed project's operational

hydrology and water quality impacts, since it would change the existing site stormwater conditions. This alternative would, however, avoid one of the proposed project's potentially significant noise impacts (NOI-2) since it would not result in dedicated community meeting space. Under the Reduced Project Alternative, the YCL would still demolish the historic Yolo Branch Library building. Thus, this alternative would not avoid or substantially lessen the significant and unavoidable impact to the Yolo Branch Library building that would occur under the proposed project.

S.4.4 Environmentally Superior Alternative

The No Project Alternative is the least environmentally damaging alternative because it avoids, at least in the short-term, the significant and unavoidable impact on the historic Yolo Branch Library building; however, it achieves none of the objectives for the proposed project and, in the long-term, would not avoid the proposed project's significant and unavoidable impact on the library building.

The Reduced Project Alternative would obtain half of the proposed project's objectives, albeit to a lesser degree than the proposed project, but would not avoid or substantially lessen the proposed project's impacts.

The proposed project would meet all objectives and result in similar impacts as the No Project Alternative (in the long-term) and the Reduced Project Alternative. For these reasons, the proposed project is considered the environmentally superior alternative.

S.5 KNOWN AREAS OF CONTROVERSY / ISSUES TO BE RESOLVED

CEQA Guidelines Section 15123(b) requires the EIR Summary to identify areas of controversy known to the Lead Agency, including issues raised by agencies and the public and issues to be resolved, including choice among alternatives and whether and how to mitigate the significant effects of the project.

The following issues were most prominent during EIR scoping process:

- The preservation, archiving, and reuse of existing architectural elements in the new library building's design

The environmental analyses in this Draft EIR consider the issues and concerns raised by agencies and the public in its identification of the scope of the EIR and the potential impacts resulting from implementation of the New Yolo Branch Library Building Project. The Draft EIR identifies that implementation of the New Yolo Branch Library Building Project would result in one significant and unavoidable impact to the existing Yolo Branch Library building, a known historical resource; however, by implementing the New Yolo Branch Library Building Project the YCL would achieve the objectives of the project and continue to provide access to free, public library services. Thus, the YCL and the County Board of Supervisors would need to decide whether the benefits of the New Yolo Branch Library Building Project outweigh its significant and unavoidable impact.

CHAPTER 1 INTRODUCTION

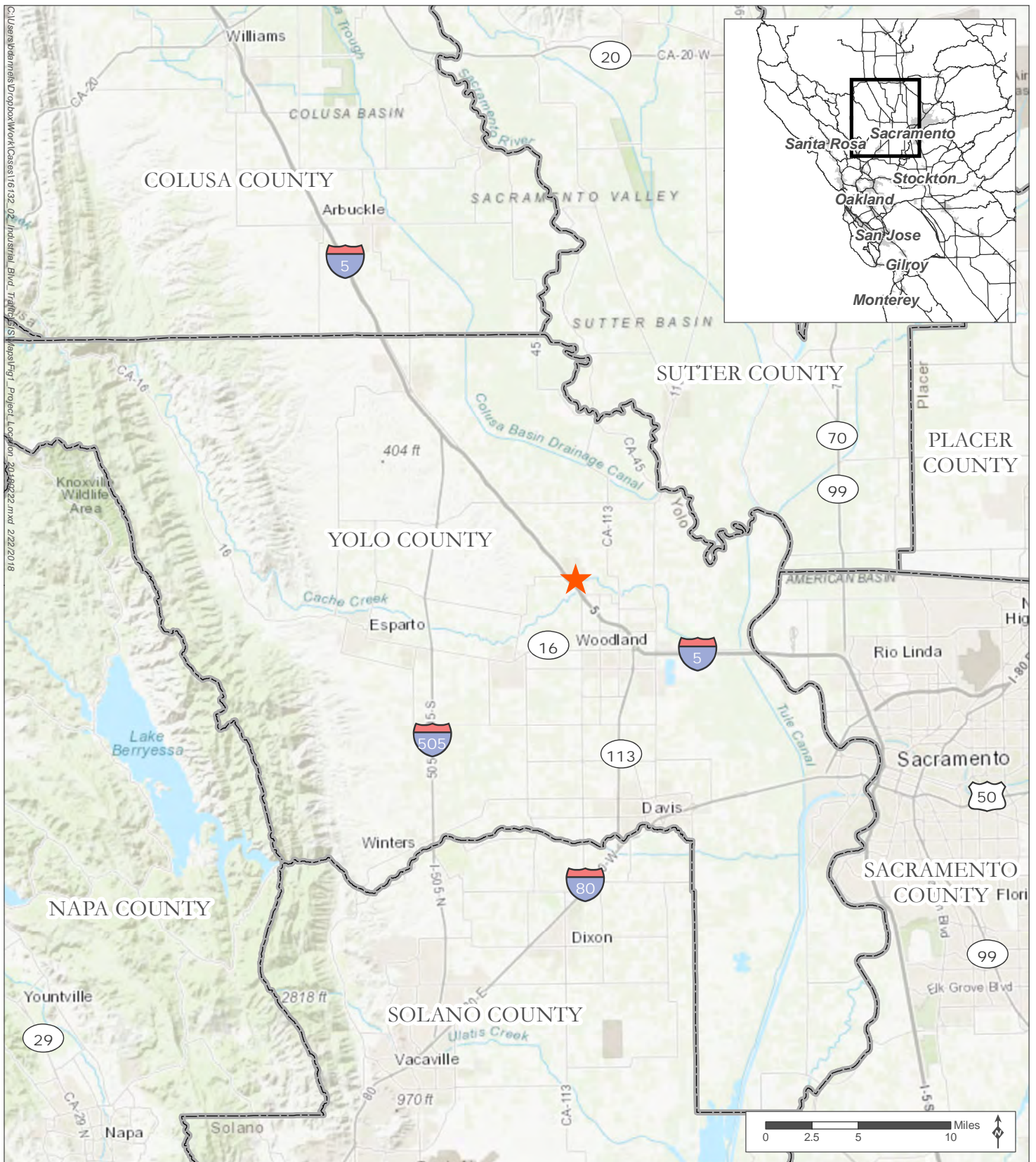
The Yolo County Library (YCL) has prepared this Environmental Impact Report (EIR) to evaluate the potentially significant environmental impacts that may result from the construction and operation of its proposed New Yolo Branch Library Building Project (proposed project). This proposed project would demolish and replace the existing Yolo Branch Library with a new library building. The existing Yolo Branch Library is located at 37750 Sacramento Street, in the unincorporated Town of Yolo, near the center of the County. The existing Yolo Branch Library was constructed in 1918 and is a historical resource listed on the California Register of Historical Resources (CRHR) and the National Register of Historic Places (NRHP); however, existing structural and other concerns have required the County to cease use of the existing Yolo Branch Library building. After exploring different options for continuing library services and coordinating with key stakeholders, including the Friends of the Yolo Branch Library of Yolo and a Community Advisory Group assembled by the YCL, the YCL is proposing to demolish and replace the existing Yolo Branch Library with a new library building.

1.1 PROJECT OVERVIEW AND BACKGROUND INFORMATION

Figure 1-1 shows the regional setting for the YCL and the proposed project. The YCL strives to bring diverse and dynamic programs and services to its many communities and residents through innovation, communication, engagement, collaboration, and diversity, providing opportunities for everyone to read, grow, discover, and interact with one another and the world at large. The YCL serves seven communities and the rural areas of the County. It provides public library services to the entire County, except for the City of Woodland, which funds its own public library.

The YCL operates branch libraries in Clarksburg, Davis, Esparto, Knights Landing, West Sacramento, Winters, and Yolo. The Yolo Branch Library is located in the center of the County, generally along the Interstate-5 corridor, between Woodland and Dunnigan. There are approximately 3,270 residents within the Yolo Branch Library's service area, which is expected to increase by 13% to approximately 3,690 residents by 2035 (Yolo County, 2017a).

As described in more detail in Chapter 2 (Project Description) and Chapter 4 (Cultural/Tribal Cultural Resources), the existing Yolo Branch Library is a historical resource that is listed on both the NRHP and the CRHR; however, a structural review of the existing, historic Yolo Branch Library building in 2016 identified significant signs of foundation settlement and wood decay (Buehler & Buehler, 2016). Specifically, the northern end of the building has settled several inches over time and the west side of the building shows signs of considerable dry rot. In addition, the siding on some areas of the building is split, cracked, and fallen away, exposing the building's structural components beneath the siding. The 2016 structural review concluded these structural deficiencies created a real risk of collapse of the entry way roof, which could precipitate a collapse of the building's overall roof structure, and recommended the County consider discontinuing the use of the building. In addition to these structural deficiencies, the County has also identified other plumbing, electrical, fire and life safety system, and deferred maintenance issues as well as Americans with Disabilities Act (ADA) access and compliance issues.



Source: County of Yolo, 2007; ESRI, 2018; MIG, 2018



-  Project location
-  County boundary

Figure 1-1 Regional Setting

New Yolo Branch Library Building Project

1.1.1 Yolo Branch Library Modular Building (Interim Library Services)

Given the Yolo Branch Library building's existing structural, plumbing, fire and life safety, and other deficiencies, the County identified the need to install a temporary modular building adjacent to the existing Yolo Branch Library building while it developed a longer-term solution to address library services in the Yolo Branch Library service area. In early November 2017, the County installed an approximately 1,350 square-foot temporary modular building to provide interim library services to the community. On March 10, 2018, the Yolo Branch Library operations were moved into the temporary modular building, and will continue until the proposed project is built or the County approves a different long-term plan for library services in the area. The YCL currently leases the temporary modular building on a month-to-month basis. After completion of the new library, the temporary modular building would be removed from the site and returned to the vendor.

As described in more detail in Section 1.4.1, the County released the Notice of Preparation (NOP) for this EIR on November 13, 2017. Pursuant to California Environmental Quality Act (CEQA) Guidelines Section 15125(a), an EIR must include a description of the physical environmental conditions in the vicinity of a project at the time the NOP was published; however, these conditions may or may not constitute the baseline environmental setting and conditions against which a lead agency evaluates a project's potential environmental effects.

Since the temporary modular building was planned for and installed on site before the County released the NOP for this EIR, the existing setting described in this EIR identifies the temporary modular building as part of the library property. In addition, since the intent of the temporary modular building was to provide interim library services, the existing setting described in this EIR also identifies that Yolo Branch Library operations now occur primarily out of the temporary modular building (even though the transfer of operations did not occur until after the County released the NOP). Where appropriate, this EIR uses historical data associated with the existing historical Yolo Branch Library building to evaluate certain impacts (e.g., energy use, water use, community use of the library) because this historical data provides the proper baseline and environmental conditions in which to evaluate the potential new Yolo Branch Library building.

1.1.2 Yolo County Acquisition of the Property at 14184 2nd Street, Yolo, CA

In October 2017, the County Board of Supervisors adopted Resolution Number 17-127, authorizing the purchase of the approximately 0.37-acre property at 14184 2nd Street (Assessor's Parcel Number [APN] 025-401-012) that borders the Yolo Branch Library to the north (Yolo County, 2017b). The subsequent Purchase and Sale Agreement for the property was executed in October 2017, at which point the County took ownership of the property (Yolo County, 2017c).

Since the County took ownership of the property at 14184 2nd Street before it released the NOP for this EIR, the existing setting described in this EIR identifies the County as the owner of the property at 14184 2nd Street in Yolo, CA.

1.1.3 2017 General Plan/Zoning Code Amendments for 14184 2nd Street, Yolo, CA

In February 2018, the County's Community Services Department circulated for public review a Notice of Intent (NOI) to Adopt a Negative Declaration (ND) and Notice of Public Hearing and associated Initial Study (IS)/ND evaluating the County's proposed 2017 General Plan and Zoning Code Amendments, including amendments to the zoning district and land use

designation for 14184 2nd Street (Yolo County, 2018a and 2018b). The proposed amendments would change the zoning district at 14184 2nd Street from Low Density Residential (R-L) to Public and Quasi-Public (PQP) and the land use designation at 14184 2nd Street from Residential Low (RL) to Public and Quasi-Public (PQ).

For the purposes of this EIR, the existing zoning (R-L) and General Plan land use (RL) designations in effect in November 2017 (when the County issued the NOP for this EIR) for 14184 2nd Street are considered to be the baseline environmental conditions against which the potential impacts of the proposed new Yolo Branch Library Building are evaluated.

As described in more detail in Chapter 3, the County is incorporating the information and findings from its 2017 General Plan and Zoning Code Amendments IS/ND into this EIR

1.2 CEQA LEAD AGENCY INFORMATION

CEQA establishes the YCL as the Lead Agency for the project. The Lead Agency is defined in CEQA Guidelines Section 15367 as “the public agency which has the principal responsibility for carrying out or approving a project.” Under CEQA, the Lead Agency is responsible for preparing the appropriate environmental review documentation. The YCL has determined an EIR is the appropriate CEQA document for the proposed project and has prepared this Draft EIR in accordance with the provisions of CEQA (PRC §21000 et seq.) and the CEQA Guidelines (14 CCR §15000 et seq.). The YCL is both the proponent and CEQA Lead Agency for the proposed project. The Yolo County Board of Supervisors serves as the decision-making body for the YCL and is responsible for approving the New Yolo Branch Library Building Project.

1.3 INTENDED USES OF THIS EIR

This EIR is intended to evaluate the potential direct and indirect physical, environmental effects associated with implementation of the YCL’s New Yolo Branch Library Building Project, which is described in detail in Chapter 2, Project Description. An EIR is an objective, informational document that informs decision makers and the public of the potential for significant project effects, including possible ways to minimize those effects, and describes reasonable alternatives to the project (CEQA Guidelines §15121(a)). An EIR must be prepared with a sufficient degree of analysis to provide decision makers with information enabling them to make a decision that intelligently considers the project’s potential direct and indirect environmental consequences. The evaluation of the environmental effects of the proposed project need not be exhaustive, but the sufficiency of an EIR is to be reviewed in light of what is reasonably feasible (CEQA Guidelines §15151).

1.3.1 Responsible, Trustee, and Interested Agencies

The information contained in this EIR will be used for all project-related discretionary approvals subject to environmental review, including potential approvals by responsible, trustee, and other agencies.

CEQA Guidelines Section 15381 defines a responsible agency as “a public agency which proposes to carry out or approve a project for which a Lead Agency has prepared an EIR.” Responsible Agencies for the proposed project may include, but are not limited to, the Yolo-Solano Air Quality Management District (YSAQMD), the Yolo Fire Protection District, and the Yolo Habitat Conservancy.

CEQA Guidelines Section 15386 defines a trustee agency as “a state agency having jurisdiction by law over natural resources affected by a project which are held in trust for the people of the State of California.” Trustee agencies with jurisdiction over the resources potentially affected by the proposed project may include, but are not limited to, the California Department of Fish and Wildlife (CDFW).

CEQA Guidelines Section 15379 excludes federal government agencies from the definition of a “public agency.” Thus, the U.S. Fish and Wildlife Service and the U.S. Army Corps of Engineers are not responsible or trustee agencies for the purposes of CEQA, but rather interested agencies that may be concerned with the project and its potential effects on jurisdictional resources.

A complete list of the permits and approvals the project may require is provided in Section 2.5.

1.4 EIR SCOPING INFORMATION

1.4.1 Notice of Preparation (NOP) of an EIR

The YCL prepared an NOP for this EIR in accordance with CEQA Guidelines Section 15082. The NOP is included in Appendix A to this EIR. The YCL distributed the NOP to the State Clearinghouse (SCH; #2017112036) and posted the NOP for review at the Yolo County Clerk-Recorder’s Office on November 13, 2017. The YCL also posted the NOP at the Yolo Branch Library, and distributed the NOP to potential local responsible agencies, certain federal agencies, and interested individuals and organizations (see Appendix A). In addition, the County’s Community Services Department electronically mailed the NOP to a list of more than 100 recipients. Finally, the YCL made an electronic copy of the NOP available to the public via a weblink on the YCL’s website.

The YCL provided a 30-day public review period for the NOP from November 14, 2017 to December 15, 2017. Written comments on the NOP were received from the Yolo Fire Protection District, Yolo Habitat Conservancy, the Central Valley Regional Water Quality Control Board, and two members of the public. These written comments are summarized in Section 3.2 and are included in Appendix A to this EIR.

1.4.2 Public EIR Scoping Meeting

The YCL held a public scoping meeting on November 30, 2017 at the Yolo Branch Library. Approximately 10 interested individuals, mostly consisting of members of the Friends of the Yolo Branch Library of Yolo, a community organization, attended the meeting. Oral comments heard at this scoping meeting are summarized in Section 3.2. No written comments were received at the meeting.

1.4.3 Native American Consultation

As required by Assembly Bill (AB) 52, Yolo County contacted five California Native American tribes regarding the proposed project and its potential effects on tribal cultural resources. The County received two replies, from the Wilton Rancheria and the Yocha Dehe Wintun Nation. The Wilton Rancheria did not request formal consultation pursuant to AB 52; however, the Yocha Dehe Wintun Nation did request formal consultation, which was initiated in May 2018. Please refer to Chapter 4 for detailed information regarding Native American outreach and consultation conducted for the proposed project.

1.4.4 EIR Scope and Content

In accordance with CEQA Guidelines Section 15126, this EIR identifies and focuses on the potentially significant environmental effects of the proposed project, as determined based on the project as described in this EIR and written comments received during the public review period for the NOP (November 14, 2017 to December 15, 2017). Accordingly, this EIR focuses on one or more significant impacts to the following resource areas identified in Appendix G to the State CEQA Guidelines: Cultural/Tribal Cultural Resources, Aesthetics/Visual Resources, Air Quality, Biological Resources, Hazards and Hazardous Materials, Hydrology and Water Quality, and Noise and Vibration. Section 3.3 provides more information on the proposed project's impacts found not to be significant

1.5 CHAPTER REFERENCES

Buehler & Buehler 2016. "Re: Yolo Branch Library – Structural Review 37750 Sacramento St., Yolo, CA." Letter from Lawrence John Summerfield, CA SE#3605, Buehler & Buehler, to Terry Vernon, Yolo County. June 9, 2016.

Yolo County 2017a. *Yolo County Library Facilities Master Plan (2018-2035)*. Yolo County, CA. September 11, 2017.

Yolo County 2017b. *Resolution Authorizing Purchase of Fee Interest In 14184 2nd Street in the Town of Yolo in the Unincorporated Area of the County of Yolo, State of California Assessor's Parcel Number 025-401-012*. Board of Supervisors Resolution No. 17-127. Yolo County, CA. October 10, 2017.

_____ 2017c. *Purchase and Sale Agreement and Initial Joint Escrow Instructions*. October 2017.

_____ 2018a. *Notice of Intent to Adopt a Negative Declaration and Notice of Public Hearing*. Yolo County Community Services Department. February 2018.

_____ 2018b. *Initial Study/Negative Declaration File #2017-035 2017 General Plan and Zoning Code Amendments*. Yolo County Community Services Department. February 2018.

CHAPTER 2 PROJECT DESCRIPTION

The Yolo Branch Library, located near the center of the County (see Figure 1-1), was originally constructed in 1918. Recent inspections of the Yolo Branch Library have identified structural and other concerns that necessitate discontinuing long-term use of the existing Yolo Branch Library building. Given the Yolo Branch Library's existing condition, the YCL is proposing to demolish and replace the existing Yolo Branch Library with a new library facility. In general, the YCL's proposed New Yolo Branch Library Building Project would involve:

- Removal of the existing Yolo Branch Library building and associated site features at 37750 Sacramento Street in unincorporated Yolo County;
- Removal of existing residential development at 14184 2nd Street in unincorporated Yolo County;
- Rezoning of the existing residential parcel to zoning (PQP) and General Plan land use (PQ) designations that permit a library use;
- Merger of the approximately 0.27-acre Yolo Branch Library and approximately 0.37-acre residential parcel into a single, approximately 0.65-acre parcel of land; and
- Construction and operation of a new, approximately 3,800 square-foot, single-story Yolo Branch Library building.

The YCL anticipates beginning site demolition in Spring 2019 and opening the new Yolo Branch Library Building in Winter 2019; however, the proposed project's construction schedule may change depending on the timing and availability of future funding. Although the start and end dates of construction may change, the type and total duration of potential construction activities would remain the same as described in this EIR.

2.1 PROJECT LOCATION AND SITE DESCRIPTION

The existing Yolo Branch Library is located at 37750 Sacramento Street, in the Town of Yolo, in unincorporated Yolo County (38°43'60" north latitude and 121°48'27" west longitude). The Town of Yolo is located adjacent to Interstate 5 (I-5), in the center of the County, and is surrounded by agricultural lands. The existing Yolo Branch Library property is an approximately 0.27-acre parcel of developed land (APN 025-401-013) located at the northwest corner of 2nd Street and Sacramento Street, near the center of town; the adjoining residential property to the north at 14184 2nd Street (APN 025-401-012) is a 0.37-acre parcel of developed land. Together, the two properties total 0.65 acres in size and comprise the proposed project area.

The existing library property consists of the existing, approximately 1,000 square-foot, one-story Yolo Branch Library building (currently vacant and closed to the public), an approximately 1,350 square-foot temporary modular building (providing interim library services), concrete and gravel parking areas, and a small grassy area. The existing residential property consists of a small, unoccupied house and associated residential structures, e.g. garage, exterior storage areas, etc.). In general, the proposed project area is bordered by a single-family residential property on the north, 2nd Street and residential land uses on the east, Sacramento Street and residential and commercial land uses on the south, and the Yolo Fire Station on the west (see Figure 2-1 to Figure 2-5). Cache Creek High School is located approximately 400 feet south of the proposed project area, at the intersection of Clay Street and 2nd Street.



Figure 2-1 Project Vicinity

New Yolo Branch Library Building Project

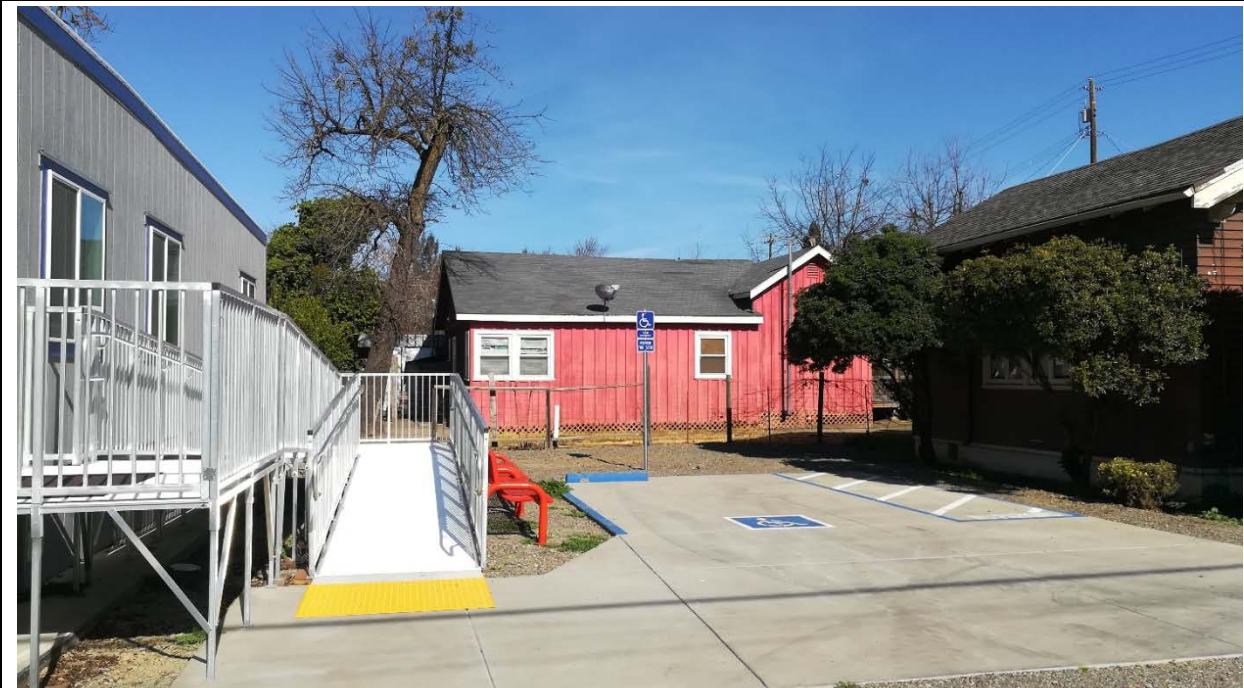
Figure 2-2 Site Photos (Yolo Branch Library Property)

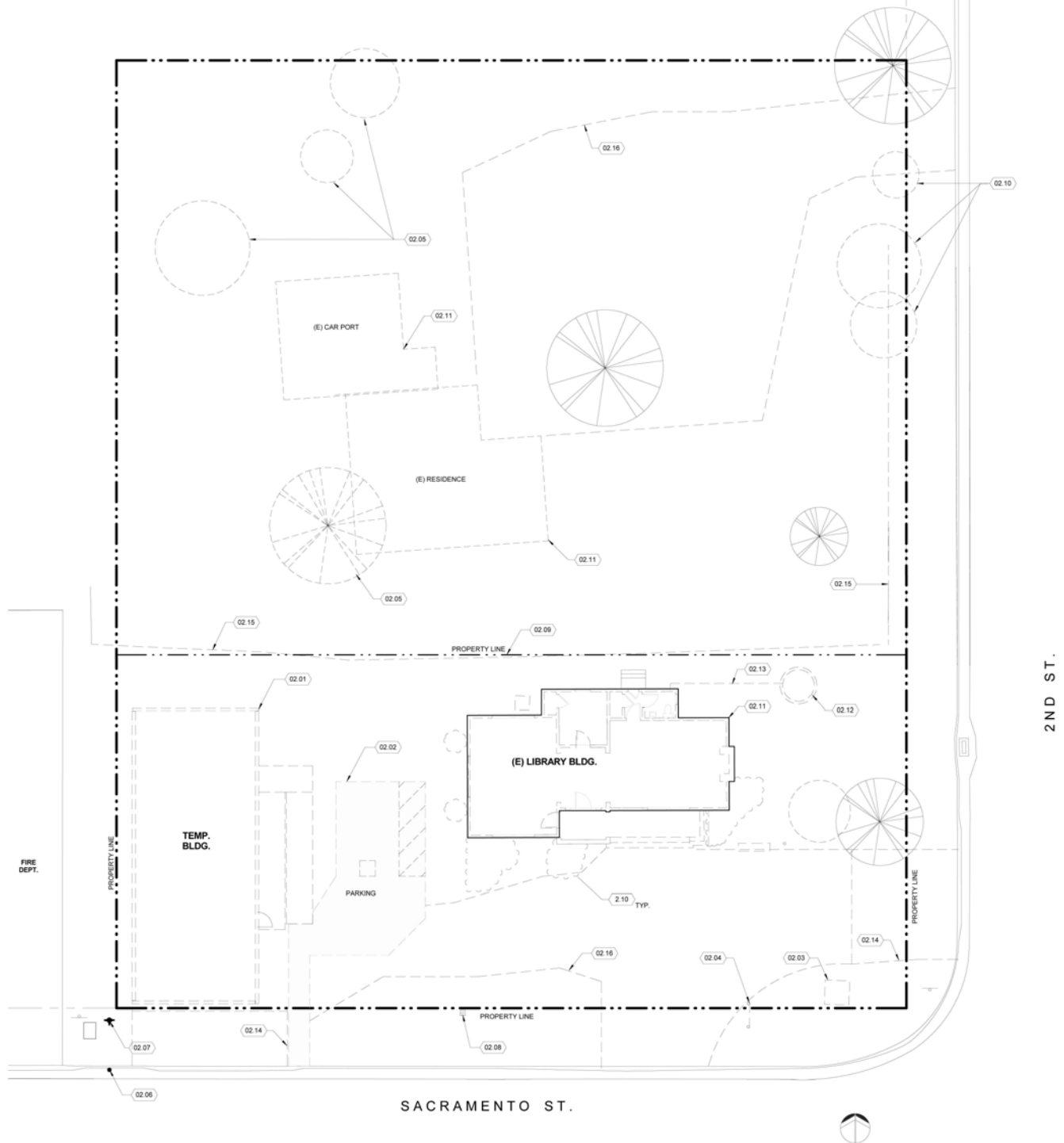
Figure 2-2. Top: Existing historic Yolo Branch Library building as seen from Sacramento Street (photo date January 2017). Bottom: Looking north across the library property from Sacramento Street with (from left to right) the temporary modular (interim library services), the residential structure at 14184 2nd Street, and the existing historic Yolo Branch Library building (photo date February 2018).

Figure 2-3 Site Photos (Residential Property at 14184 2nd Street)

Figure 2-3. Top: Existing, vacated residential home at 14184 2nd Street looking west. Bottom: View looking north along 2nd Street (i.e., toward 14184 2nd Street) from existing Yolo Branch Library property. Both photos were taken in February 2018.

Figure 2-4 Site Photos (Surrounding Areas)

Figure 2-4. Top: View looking northwest to the existing Yolo Branch Library building. The Yolo Fire Station is located left of center in the photo. The temporary modular building was not yet installed at the site (photo date January 2017). Bottom: View from the Yolo Branch Library property looking southeast across the intersection of 2nd Street and Sacramento Street (photo date February 2018).



LEGEND

----- DASHED LINE DENOTES ELEMENT TO BE DEMOLISHED

GENERAL NOTES:

1. VERIFY IN FIELD EXACT LOCATION OF ELEMENTS IDENTIFIED TO BE DEMOLISHED. ELEMENTS SHOWN MAY BE APPROXIMATED.

DEMOLITION NOTES

- 02.01 (E) MODULAR BUILDING TO BE REMOVED FROM SITE UPON COMPLETION OF (N) LIBRARY BUILDING.
- 02.02 (E) CONC. PARKING TO BE DEMOLISHED.
- 02.03 (E) BOOK DROPBOX TO BE REMOVED.
- 02.04 (E) MONUMENT SIGN TO BE REMOVED.
- 02.05 (E) TREE TO BE REMOVED.
- 02.06 (E) POWER POLE TO REMAIN
- 02.07 (E) FIRE HYDRANT
- 02.08 (E) WATER METER.
- 02.09 (E) PROPERTY LINE TO BE ABANDONED WITH LOT MERGER.
- 02.10 (E) SHRUB TO BE REMOVED.
- 02.11 (E) STRUCTURE TO BE DEMOLISHED.
- 02.12 APPROXIMATE LOCATION OF SEPTIC SEEPAGE DEVICE TO BE ABANDONED.
- 02.13 APPROXIMATE LOCATION OF (E) SANITARY SEWER TO BE REMOVED.
- 02.14 (E) ASPHALT CONCRETE PAVING TO BE REMOVED.
- 02.15 (E) FENCING (TYPE VARIES) TO BE REMOVED.
- 02.16 APPROX. EXTENT OF (E) GRAVEL DRIVEWAY TO BE REMOVED.

Source: WMB Architects, 2018

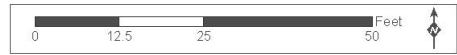


Figure 2-5 Existing Site Plan
New Yolo Branch Library Building Project



2.1.1 Historical Resource Status of the Yolo Branch Library Building

The Yolo Branch Library building is listed on the NRHP, as well as the CRHR. The library was listed on the NRHP in 1990 based on its social history and architectural significance. The NRHP filing includes a detailed description of the history and architectural characteristics of the library. The library was designed by noted architect William H. Weeks and is an example of a California Carnegie building constructed of wood that incorporates some elements of the “Craftsman” style. The NRHP registration forms indicated the exterior of the library was mostly unaltered at the time of its NRHP listing (1990); however, the County has since added solar panels to the library roof. The NRHP registration forms note the library is an important visual and social contributor to the Town of Yolo. Please refer to Chapter 4, Cultural/Tribal Cultural Resources, for more detailed information on the historical status of the Yolo Branch Library building.

2.1.2 Existing Library Operations and Programming

As described in Section 1.1.1, the County ceased library services at the existing, historic Yolo Branch Library building in early March 2018. Although library services are now provided out of the temporary modular building, the YCL’s Yolo branch library operations and programming remain unchanged and are described below.

The Yolo Branch Library is currently open four days per week: Tuesdays (1:00 PM to 5:30 PM), Wednesdays (3:00 PM to 8:00 PM), Thursdays (10:00 AM to 12:00 PM and 1:00 PM to 5:30 PM), and Saturdays (12:00 PM to 5:00 PM). The library is currently closed on Sundays, Mondays and Fridays. The Yolo Branch Library does not currently have dedicated community-use facilities (e.g., a meeting room) and is not available for night time events unless the library is scheduled to be open and library staff are present.

Existing library programs include weekly bilingual story times, family craft programs, holiday themed activities, board game nights, summer reading program (all ages), Food Bank distribution location, and Drought Food Assistance Program distribution location.

The library’s collection consists of approximately 4,000 items including:

- High interest materials for adults, teens, and children;
- Basic collections of fiction, nonfiction, and reference materials; and
- A variety of magazines, newspapers, audiobooks, CDs, and DVDs.

There are three computer work stations available including one Early Literacy computer for children and one featuring the library’s online catalog.

2.1.3 Existing Site Access

The proposed project area is situated at the corner of Sacramento Street and 2nd Street (see Figure 2-1). Gravel driveways from both streets provide access to the Yolo Branch Library property. An informal gravel parking area is also located in front of the building. The residential property at 14184 2nd Street is accessed from a gravel driveway off 2nd Street.

2.1.4 Existing Elevation and Topography

The proposed project area and vicinity are generally flat. Surface elevations are approximately 74 to 76 feet above mean sea level (AMSL). The project area is located within a Federal Emergency Management Agency (FEMA)-defined Special Flood Hazard Area (FEMA, 2012);